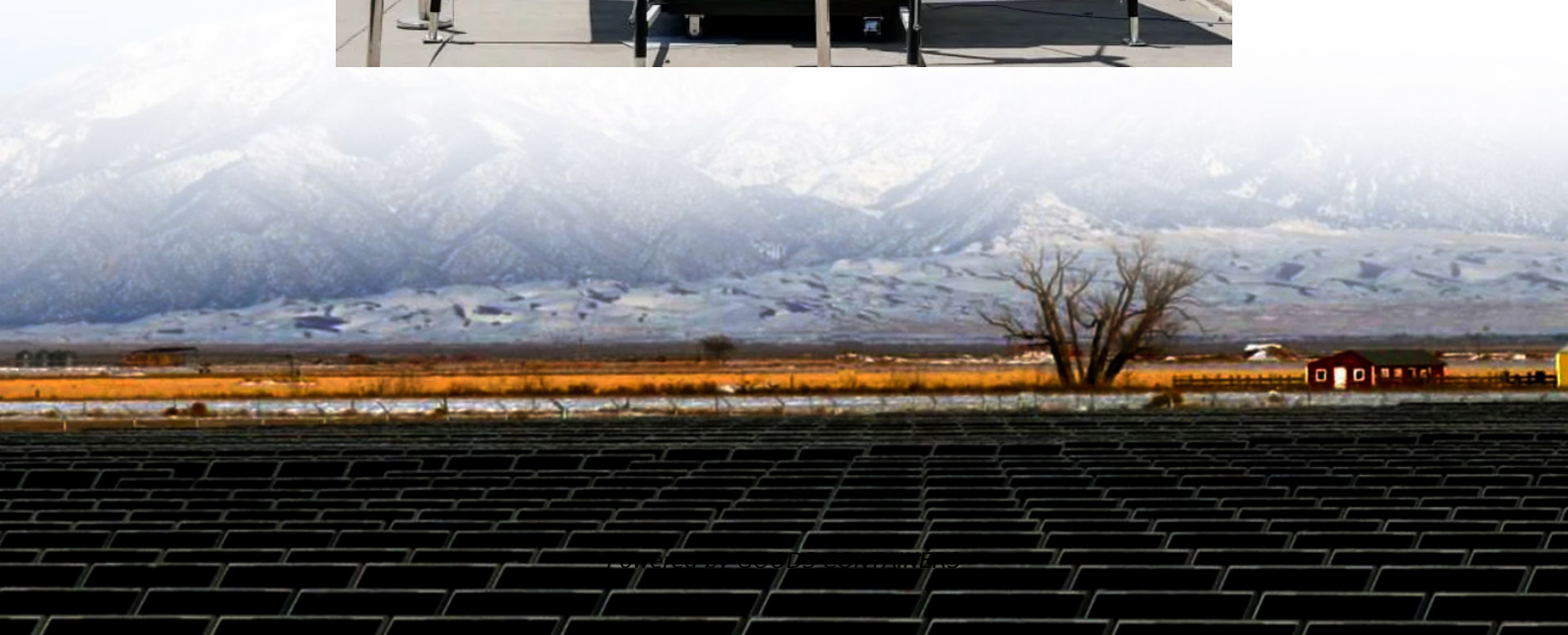


# **How big a battery is needed for an inverter output of 90a**





## Overview

---

What is the recommended battery size for an inverter?

Interpreting Results: Once you input the required data, the calculator will generate the recommended battery size in ampere-hours (Ah). For instance, if your power consumption is 500 watts, the usage time is 4 hours, and the inverter efficiency is 90%, the calculator might suggest a battery size of approximately 222 Ah.

How many batteries in a solar inverter?

For example, if your required battery capacity is 20,000 Ah and you choose a battery with a capacity of 200 Ah, you would need  $20,000 \text{ Ah} / 200 \text{ Ah} = 100$  batteries in your bank. How to Calculate Your Solar Inverter Size?

Inverters have two important power ratings: continuous power rating and peak power rating.

What wattage Inverter should I use?

Match the inverter's continuous wattage rating to the battery's discharge capacity. For a 12V 200Ah battery (2.4kWh), a 2000W inverter is ideal. Formula:  $\text{Inverter Wattage} \leq (\text{Battery Voltage} \times \text{Ah Rating} \times 0.8)$ . Factor in surge power needs but prioritize sustained loads.

What is the capacity of an inverter battery?

The capacity of an inverter battery, measured in ampere-hours (Ah), determines how much power it can store and supply over time. A higher Ah rating means the battery can provide backup power for a longer duration before requiring a recharge. The basic formula for calculating battery capacity is:



## How big a battery is needed for an inverter output of 90a



### [How to Calculate Solar Panel, Battery, and Inverter Size](#)

Nov 20, 2023 · Calculate How Much Power You Will Need Before sizing your solar panel system components, it's essential to understand your energy needs. This will help you determine the ...

### [How Much AH Battery is Required for Home Inverter: ...](#)

Mar 15, 2025 · To find the required Ah battery for your home inverter, follow this guideline: For a 12-volt inverter, use 20% of its capacity. For a 24-volt inverter, use 10%. For example, a 500 ...

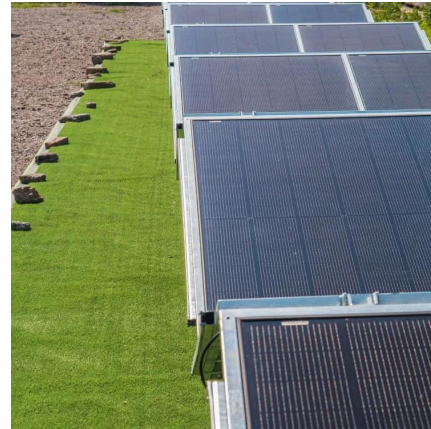


### [Calculate Battery Size For Any Size Inverter \(Using Our ...](#)

Mar 3, 2023 · To recharge your battery from time to time you would need the right size solar panel to do the job! Read the below article to find out the suitable solar panel size for your battery ...

### [Inverter Load Calculator , Power Consumption Calculator](#)

May 5, 2025 · About Inverter Load Calculator Our free Inverter Load Calculator helps you determine the exact power requirements of your home appliances and recommends the ideal ...



### [Calculate Battery Size for Inverter Calculator](#)

Mar 14, 2025 · The Calculate Battery Size for Inverter Calculator helps you determine the optimal battery capacity needed to support your inverter system. By inputting critical parameters such ...



### [How to Calculate the Right Battery Size for Your Inverter ...](#)

Determine Battery Configuration Fix that how many batteries you require to get the required capacity. Batteries can be connected in series to increase voltage or in parallel to increase ...



### **How to Calculate the Right Inverter Battery Capacity for Your ...**

Feb 24, 2025 · Learn how to calculate the right inverter battery capacity for your needs with a simple formula. Understand power requirements, efficiency losses, and the best battery types ...





## Contact Us

---

For catalog requests, pricing, or partnerships, please visit:  
<https://www.woodgoods.pl>

### Scan QR Code for More Information



<https://www.woodgoods.pl>