

How big a battery does the inverter need





Overview

What is the recommended battery size for an inverter?

Interpreting Results: Once you input the required data, the calculator will generate the recommended battery size in ampere-hours (Ah). For instance, if your power consumption is 500 watts, the usage time is 4 hours, and the inverter efficiency is 90%, the calculator might suggest a battery size of approximately 222 Ah.

Why should you use the calculate battery size for inverter calculator?

Using the Calculate Battery Size for Inverter Calculator can significantly streamline your power management process. This tool is particularly beneficial in scenarios where precise power estimation is critical, such as designing renewable energy systems, ensuring backup power in off-grid locations, or optimizing battery usage for cost efficiency.

How many batteries in a solar inverter?

For example, if your required battery capacity is 20,000 Ah and you choose a battery with a capacity of 200 Ah, you would need $20,000 \text{ Ah} / 200 \text{ Ah} = 100$ batteries in your bank. How to Calculate Your Solar Inverter Size?

Inverters have two important power ratings: continuous power rating and peak power rating.

What wattage Inverter should I use?

Match the inverter's continuous wattage rating to the battery's discharge capacity. For a 12V 200Ah battery (2.4kWh), a 2000W inverter is ideal. Formula: $\text{Inverter Wattage} \leq (\text{Battery Voltage} \times \text{Ah Rating} \times 0.8)$. Factor in surge power needs but prioritize sustained loads.



How big a battery does the inverter need



[Solar Inverter & Battery Sizing Calculator](#)

Apr 30, 2025 · Choosing the correct inverter and battery size is crucial for every microgrid system. Our Solar Inverter and Battery Sizing Calculator provides a simple and user-friendly solution.

[Calculate Battery Size For Any Size Inverter \(Using Our ...\)](#)

Mar 3, 2023 · To recharge your battery from time to time you would need the right size solar panel to do the job! Read the below article to find out the suitable solar panel size for your battery ...



[Calculate Battery Size for Inverter Calculator](#)

Mar 14, 2025 · The Calculate Battery Size for Inverter Calculator helps you determine the optimal battery capacity needed to support your inverter system. By inputting critical parameters such ...



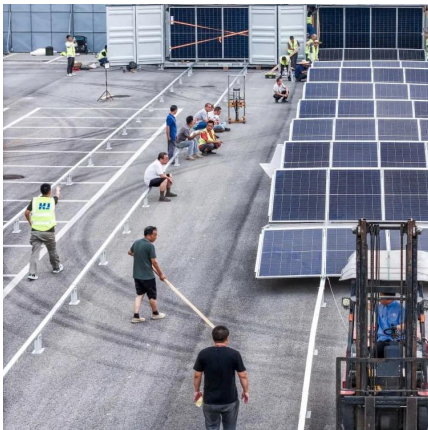
[How to Calculate Solar Panel Battery and Inverter: A Step-by ...](#)

Nov 25, 2024 · Unlock the full potential of your solar energy system with our comprehensive guide on calculating the right size for your battery and inverter. This article breaks down the essential ...



[How to Calculate Solar Panel, Battery, and Inverter Size](#)

Dec 28, 2023 · How to Calculate Your Solar Battery Bank Size? Determine how long you want your battery system to provide power during a grid outage or periods of low sunlight. This ...



[How to Calculate the Right Battery Size for Your Inverter ...](#)

Determine Battery Configuration Fix that how many batteries you require to get the required capacity. Batteries can be connected in series to increase voltage or in parallel to increase ...



Determining the Solar and Inverter Size Needed to Charge a Battery

29 Jul 2025 0 Comments When planning an off-grid or backup power system, one of the first questions people ask is: How do I determine the right Size of solar and inverter system ...





[Can an Inverter Be Too Big for Your Battery System?](#)

How to Calculate the Right Inverter Size for Your Battery Match the inverter's continuous wattage rating to the battery's discharge capacity. For a 12V 200Ah battery (2.4kWh), a 2000W inverter ...



Contact Us

For catalog requests, pricing, or partnerships, please visit:
<https://www.woodgoods.pl>

Scan QR Code for More Information



<https://www.woodgoods.pl>