

# Household power frequency 12v to 220v inverter





## Overview

---

What is a 12V inverter?

12V Inverter. A 12V inverter is an electrical device that converts 12 volts of DC power into AC power. The input power typically comes from a 12V battery. Modified sine wave power inverter can provide you 110/120V or 220/230V/240V AC power.

What is a simple 12V to 220V inverter?

Simple 12V to 220V inverters find widespread use in automotive applications, solar power systems, emergency backup power, and portable power solutions. Understanding load characteristics helps determine appropriate inverter specifications and ensures reliable operation.

What is a 12V DC to 220V AC converter?

A 12V DC to 220 V AC converter can also be designed using simple transistors. It can be used to power lamps up to 35W but can be made to drive more powerful loads by adding more MOSFETS. The inverter implemented in this circuit is a square wave inverter and works with devices that do not require pure sine wave AC.

How does a 12V DC inverter work?

This inverter can efficiently convert 12V DC from a battery into 220V AC, which can be used to power household appliances like lights and small fans. The SG3525 IC generates PWM (Pulse Width Modulation) signals, which are used to drive the IRF3205 MOSFETs. The MOSFETs switch the 12V DC battery power at a high frequency, creating an AC waveform.



## Household power frequency 12v to 220v inverter



### [Best 12V to 220V Power Inverters for Cars, Homes, and ...](#)

Sep 6, 2025 · Power inverters convert DC power from a 12V battery source into usable AC power at 220V, making them essential for cars, RVs, and off-grid applications. This article reviews ...

### [How To Make 12v DC to 220v AC Converter/Inverter Circuit ...](#)

Sep 18, 2024 · These modified inverters produce a square wave and these are not used to power delicate electronic equipments . Here, a simple voltage driven inverter circuit using power ...



### [How To Make 12v DC to 220v AC Converter/Inverter Circuit ...](#)

Circuit Design Explanation  
12V DC to 220V AC Converter Circuit Operation  
Applications of 12V DC to 220V AC Converter Circuit  
Limitations  
When this device is powered using the 12V battery, the 555 timer connected in astable mode produces square wave signal of 50Hz frequency. When the output is at logic high level, diode D2 will conduct and the current will pass through diode D1, R3 to the base of transistor Q1. Thus transistor Q1 will be switched on. When the output is at logic low level, diode D1 will co...  
When this device is powered using the 12V battery, the 555 timer connected in astable mode produces square wave signal of 50Hz frequency. When the output is at logic high level, diode D2 will conduct and the current will pass through diode D1, R3 to the base of transistor



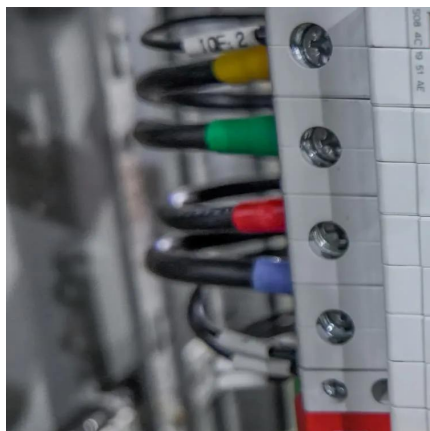
Q1. Thus transistor Q1 will be switched on. When the output is at logic low level, diode D1 will conduct and current will flow via D1 and R4 to the base of Q2, causing it to be switched on. This allows the DC voltage to be produced across the primary of the transformer at alternate intervals. The capacitor ensures that the frequency of the signal is at the required fundamental frequency. See more New content will be added above the current area of focus upon selection See more on electronicshub earthbondhon

## 12V Battery to 220V AC Power Inverter , DIY Guide

Nov 18, 2025 · Learn how to build a 12V battery to 220V AC inverter at home. Step-by-step DIY guide with circuit diagram, components, working principle, applications, and trou

### [How to Build a 150W Inverter Using SG3525 and IRF3205 ...](#)

In this blog post, we will guide you step by step to build a 150W inverter using the SG3525 PWM controller and IRF3205 MOSFETs. This inverter can efficiently convert 12V DC from a battery ...



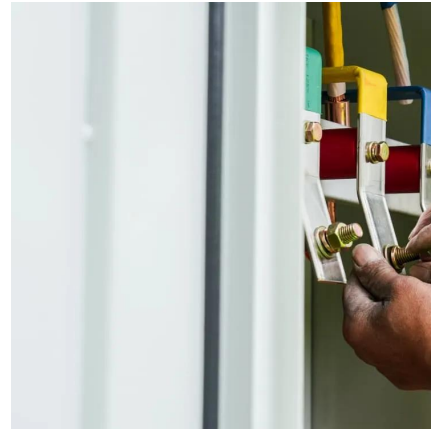
### [Best 12 Volt to 220 Volt Pure Sine Wave Inverters for Home ...](#)

Sep 6, 2025 · LiitoKala 1200W Pure Sine Wave Inverter 12V/24V to 220V Check Price on Amazon The LiitoKala 1200W Pure Sine Wave Inverter converts 12V or 24V DC power to a ...

## Complete Guide to Building a DC to AC Inverter Circuit: 12V to 220V



2 days ago · A DC to AC inverter circuit transforms 12V DC input into 220V AC output, enabling you to power standard household devices from battery sources. This comprehensive guide will ...



[How to Make Inverter 12v to 220v, 500W Using IRFZ44N.](#)

Feb 19, 2024 · How to Make Inverter 12v to 220v, 500W Using IRFZ44N. Inverter is an electrical device that converts direct current (DC) power from a 12-volt battery or another DC power ...

## Contact Us

---

For catalog requests, pricing, or partnerships, please visit:  
<https://www.woodgoods.pl>

**Scan QR Code for More Information**



<https://www.woodgoods.pl>