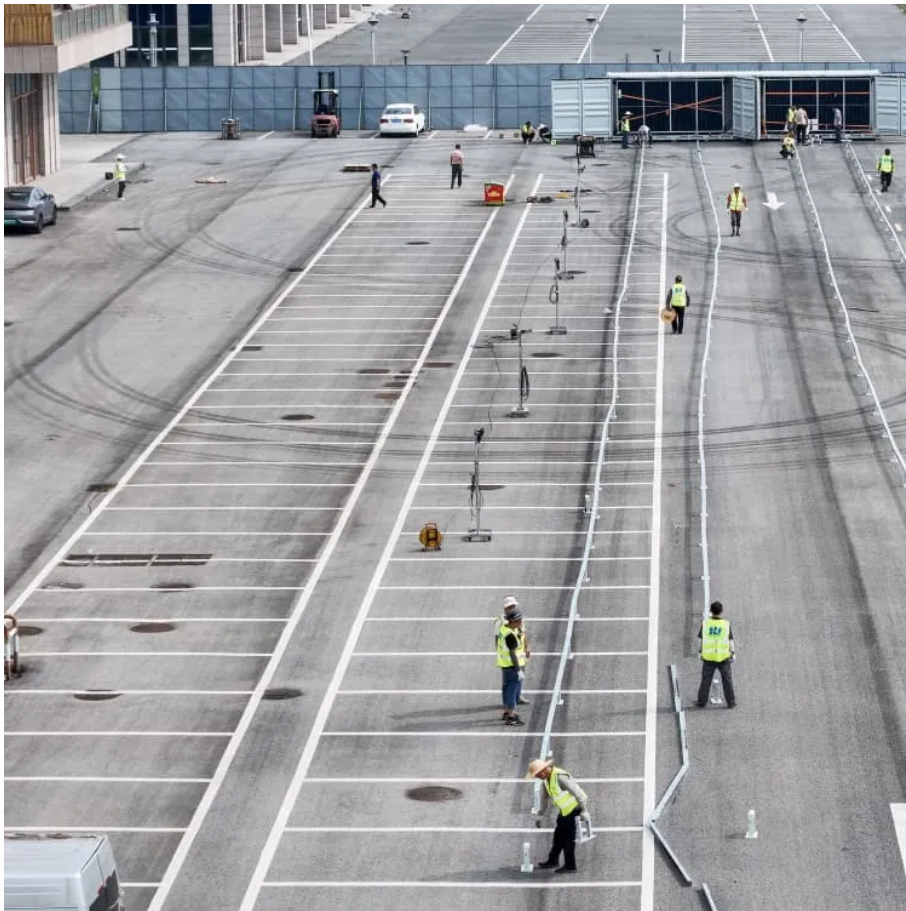


Hours up to 48v inverter





Overview

How long can a 24V inverter run?

Regardless of the size, the calculation steps are always the same. Using this calculation, a 24V inverter with a 100ah battery and 93% efficiency can run a 500W load for 2.3 hours. You have a 24V inverter with a 150ah deep cycle battery. The inverter is 93% efficient. You want to run a 700 watt load, so how long can the inverter run this?

.

How many hours a battery can a inverter run?

The number of hours a battery can power an inverter with a capacity of 5000W depends on the hours the inverter is active and drawing energy to the appliances. Based on these figures, calculate the number of hours the battery will perform.

What is a 48V low frequency inverter?

The Advantages of 48V Low Frequency Inverters 48V low frequency inverters have proven to be highly efficient in converting DC power to AC power. With their advanced technology and design, they minimize energy losses, resulting in optimal performance and reduced electricity bills.

What is a 48V solar inverter?

A 48V solar inverter converts direct current (DC) generated by solar panels into alternating current (AC), specifically designed for 48V battery systems. Its higher voltage design minimizes energy loss during transmission, making it ideal for medium-to-high power applications such as home energy storage, small farms, or communication towers.



Hours up to 48v inverter

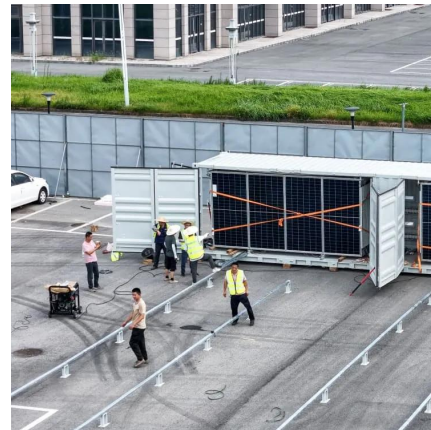


[48V Solar Power System Setup Guide: Using Hybrid Inverters ...](#)

Jun 12, 2025 · Hybrid inverters and LiFePO4 battery technology have developed in recent years to switch between solar, battery, and grid power quickly. To know the right 48V solar power ...

[48V Inverter: The Ultimate Guide to Efficient and Scalable ...](#)

May 19, 2025 · Unlock efficient power solutions with a 48V inverter--perfect for solar, off-grid, and backup systems. Learn how to choose the best one for your needs now!



[How Long Will a 2000 Watt Inverter Run? Battery Sizing and ...](#)

Mar 18, 2025 · For example, if using a 48V 100Ah LiFePO4 battery (4,800Wh capacity) with a 2000 watt inverter running at 90% efficiency: This means the system could power a full 2000W ...

[The Differences Between 24v and 48v Inverter: Which is Better?](#)

Apr 13, 2025 · The correct inverter voltage is essential for system efficiency, safety, and future scalability. In standard off-grid solar systems, RVs, or mobile power installations, choosing ...



[How much solar power does a 48v inverter use .. NenPower](#)

Jul 29, 2024 · 1. The efficiency of a 48V inverter typically varies based on the capacity and load; however, estimates suggest that a 48V inverter can utilize between 100 to 300 watts per hour ...

[48V Solar Inverters: 2025 Buyer's Guide & Top Picks ?](#)

Apr 3, 2025 · Discover the best 48V solar inverters for 2025! Compare prices, MPPT benefits, top brands like Cooli, and expert tips to maximize efficiency and savings. ??



Contact Us

For catalog requests, pricing, or partnerships, please visit:
<https://www.woodgoods.pl>



Scan QR Code for More Information



<https://www.woodgoods.pl>