

# Grid-connected inverter power outage





## Overview

---

How do grid-tied inverters work during a power outage?

During a power outage, grid-tied inverters can continue to operate using power from the solar panels. This is made possible through innovative inverter technology that allows the system to function independently of the grid. By leveraging this advancement, you can liberate yourself from the constraints of grid dynamics during outages.

Why do inverters need to be disconnected from the grid?

When the grid power is off, the inverter must disconnect from the grid to guarantee safety and prevent backfeeding electricity, which could harm utility workers. The inverter design plays an essential role in enabling this grid disconnection feature, guaranteeing seamless operation during power outages.

Why do grid-tie solar systems shut down during power outages?

A common misconception about grid-tie solar systems is that during a power outage or grid failure, the solar system will continue to provide power to loads.

Does a solar inverter work during a power outage?

To ensure your solar inverter functions during a power outage, consider installing a hybrid solar inverter that is designed to work with battery storage. This type of inverter automatically switches to battery power when the grid goes down, allowing you to keep essential appliances running.



## Grid-connected inverter power outage



### When The Utility Grid Is Down What Will An Interactive Inverter ...

Jun 20, 2025 · Grid Outage Considerations: Understand the inverter's capabilities during grid outages. Some inverters have anti-islanding features that prevent them from generating power ...

### [What Happens If You Have Solar And The Power Goes Out?](#)

To keep your power on in a blackout, you need a solar inverter that can remove your home from the grid, along with a generator or battery for longer-term energy needs. By creating your own ...



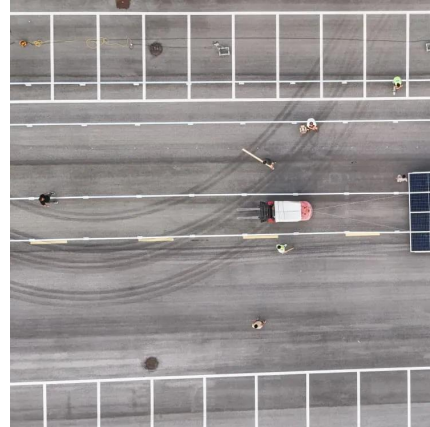
### [7 Reasons Grid-Tied PV Trips Off During Outages--and ...](#)

Aug 13, 2025 · During an outage, those devices ensure safe conditions for responders and maintenance. If the rapid-shutdown circuit triggers, module power electronics and the inverter ...



### [How does a micro inverter on grid respond to power outages?](#)

Aug 25, 2025 · Considerations for Micro Inverters During Power Outages 1. Battery Backup Integration For users who want to have power during a grid outage, integrating a battery ...



[Inverters that allow use of power when provider is down?](#)

Jan 13, 2023 · In these type systems the grid is connected through the new battery-based inverter - grid is still disconnected in an outage, but the battery DC power is inverted to AC to provide ...



[Grid-Forming Inverters in a Microgrid: Maintaining Power ...](#)

Jan 20, 2024 · This article presents an autonomous control architecture for grid-interactive inverters, focusing on the inverters providing power in a microgrid during utility outages. In ...



[What Happens to a Grid-Tied Inverter When Grid Power Is Off?](#)

Dec 17, 2024 · During a grid power outage, a grid-tied inverter seamlessly switches to utilize stored energy or renewable sources like solar panels and wind turbines, securing ...





### [Why Do Grid-Tie Solar Systems Shut Down During Power Outages?](#)

A common misconception about grid-tie solar systems is that during a power outage or grid failure, the solar system will continue to provide power to loads. Due to the nature of grid-tie ...



## Contact Us

---

For catalog requests, pricing, or partnerships, please visit:  
<https://www.woodgoods.pl>

### Scan QR Code for More Information



<https://www.woodgoods.pl>