

Grid-connected inverter frequency reduction due to high temperature





Overview

The level of current harmonics circulating in a transformer winding can affect its operating temperature and lifetime. Although the existing standards mainly consider the impact of harmonics up to 2 kHz, hi.

How can grid-forming inverters improve grid stability?

The increased penetration of inverter-interfaced renewable energy resources in modern power grids has significantly reduced system inertia, which is critical for maintaining frequency stability. Among emerging solutions, Grid-Forming Inverters (GFMs) have proven pivotal in simulating inertia and enhancing grid stability.

What should a grid-connected inverter do?

It should also comply with grid standards. If the inverter is used for grid-connected applications, its output impedance must adhere to the requirements set by grid standards to ensure grid quality and stability. It should be easy to control and adjust.

What is multi-frequency grid-connected inverter topology?

The multi-frequency grid-connected inverter topology is designed to improve power density and grid current quality while addressing the trade-off between switching frequency and power losses . Traditional grid-connected inverters rely on power filters to meet harmonic standards, but these filters increase system complexity, cost, and size.

What are the topologies of grid-connected inverters?

HERIC = highly efficient and reliable inverter concept; MLI = multilevel inverter; MPPT = maximum power point tracking; NPC = neutral point clamped; PV = photovoltaic; QZSI = Quasi-Z-source inverter; THD = total harmonic distortion. This comprehensive table presents recent developments in grid-connected inverter topologies (2020-2025). 4.



Grid-connected inverter frequency reduction due to high temperature



[A comprehensive review of grid-connected inverter ...](#)

Oct 1, 2025 · The multi-frequency grid-connected inverter topology is designed to improve power density and grid current quality while addressing the trade-off between switching frequency ...

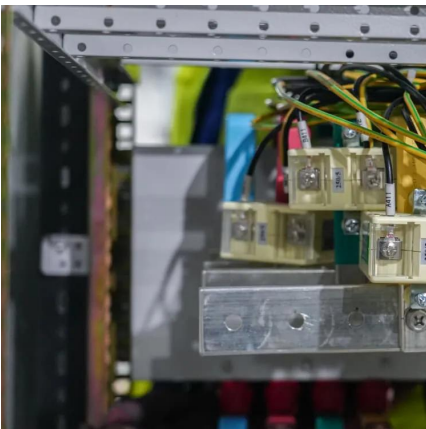
[High-Frequency Transformerless Grid-Connected ...](#)

Jul 14, 2022 · High-Frequency Transformerless Grid-Connected Inverters and Related Issues Abstract By reviewing the developing history of DC-DC converters in terms of power density, it ...



[Impact of high-frequency harmonics \(0-9 kHz\) generated by grid](#)

Nov 1, 2020 · The level of current harmonics circulating in a transformer winding can affect its operating temperature and lifetime. Although the existing standards mainly consider the impact ...



[Frontiers . A harmonic suppression strategy for grid-connected](#)

Sep 20, 2022 · QSE extracts each frequency component simultaneously, avoiding the coupling problem caused by the traditional MQR to extract each frequency component separately. ...



[Improving frequency stability in grid-forming inverters ...](#)

May 13, 2025 · By providing a reliable solution, this work outperforms previous techniques in preserving frequency stability under a range of operating circumstances, guaranteeing stable ...



[Grid Harmonics Suppression for Three Phase Dual-Frequency Grid](#)

Aug 1, 2023 · Using a low pulse ratio, the electromagnetic interference and switching loss of an inverter can be effectively reduced, particularly in high-power applications. However, due to ...



Analysis and Suppression of Medium-High Frequency Oscillations in Grid

Apr 20, 2025 · Focusing on the 125Hz medium-high frequency oscillation issues observed in renewable energy power stations, this study investigates the influence of phase-locked loop ...





[Harmonic reduction of grid-connected multilevel inverters ...](#)

Aug 29, 2023 · The control quality of grid-connected multilevel inverters depends on various factors such as the modulation technique, switching frequency, and control strategy.



Contact Us

For catalog requests, pricing, or partnerships, please visit:
<https://www.woodgoods.pl>

Scan QR Code for More Information



<https://www.woodgoods.pl>