

# **General BMS Battery Management System**





## Overview

---

What is battery management system (BMS)?

Battery Management System (BMS) is the “intelligent manager” of modern battery packs, widely used in fields such as electric vehicles, energy storage stations, and consumer electronics.

How do battery management systems work?

Battery management system (BMS) is technology dedicated to the oversight of a battery pack, which is an assembly of battery cells, electrically organized in a row x column matrix configuration to enable delivery of targeted range of voltage and current for a duration of time against expected load scenarios.

What data does a battery management system collect?

The BMS collects data such as voltage, temperature, current, and state of charge. This data is vital for system diagnostics and performance optimization. The BMS may communicate with other devices, such as vehicle controllers or cloud-based systems, to relay real-time information about the battery’s condition and performance.

What is a multi-master battery management unit (BMS)?

NX-Tech’s BMS offers a parallel pack control which provides an advantage for scalable, modular battery architectures suitable for: A multi-master BMS allows multiple Battery Management Units (BMUs) to coordinate as peers within a battery system.



## General BMS Battery Management System

---

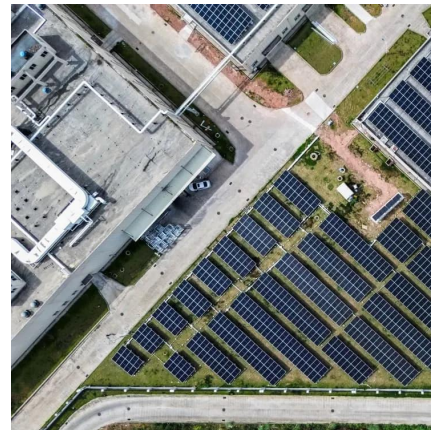


### [Understanding BMS \(Battery Management System\): The ...](#)

Nov 11, 2025 · Discover how an advanced Battery Management System (BMS) is the critical brain behind lithium-ion batteries, enhancing safety, maximizing performance, and extending ...

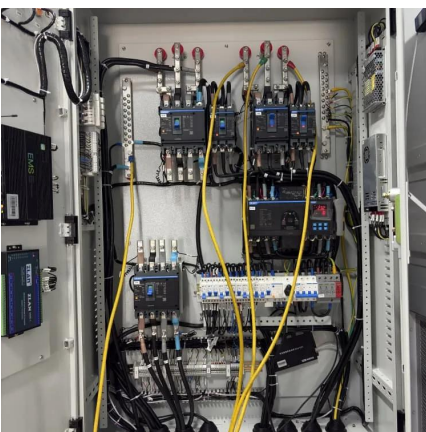
### [Battery Management System \(BMS\) Detailed Explanation: ...](#)

May 7, 2025 · Battery Management System (BMS) is the "intelligent manager" of modern battery packs, widely used in fields such as electric vehicles, energy storage stations, and consumer ...



### [Understanding the Role of a Battery Management ...](#)

Mar 12, 2025 · The battery -- a crucial element that determines the performance, safety, and efficiency of the EV -- is at the core of these cars. The battery management system (BMS) is ...



### [Battery Management System Working Principle Explained](#)

Jun 27, 2025 · Battery Management System Working Principle and Its Role in Safe Battery Use  
Smarter battery monitoring solutions are critical as the demand for lithium-ion batteries rises ...



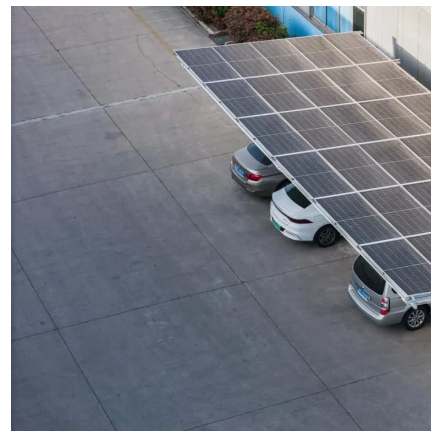
[What Is a BMS? A Complete Guide to the Basic Functions ...](#)

Apr 3, 2025 · BMS (Battery Management System) is an integrated hardware-software system designed to monitor, protect, manage, and optimize the operation of rechargeable ...



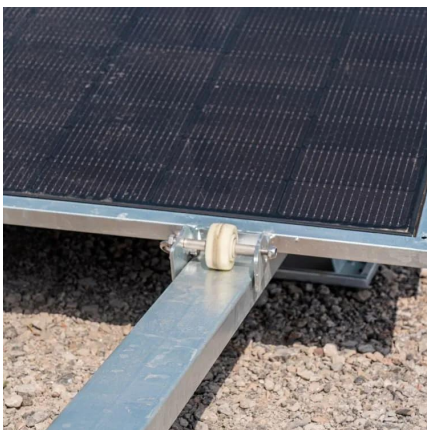
[What is a Battery Management System? Complete Guide to BMS ...](#)

Aug 3, 2025 · A Battery Management System (BMS) is an electronic control unit that monitors and manages rechargeable battery packs to ensure safe operation, optimal performance, and ...



[What is a Battery Management System \(BMS\)? - How it ...](#)

1 day ago · Battery management system (BMS) is technology dedicated to the oversight of a battery pack, which is an assembly of battery cells, electrically organized in a row x column ...





### [What is a Battery Management System \(BMS\)? Essential ...](#)

May 5, 2025 · A Battery Management System (BMS) safeguards lithium-ion batteries by monitoring voltage, current, and temperature, preventing overcharge, discharge, and thermal ...



## Contact Us

---

For catalog requests, pricing, or partnerships, please visit:  
<https://www.woodgoods.pl>

### Scan QR Code for More Information



<https://www.woodgoods.pl>