

Flywheel energy storage work





Overview

How does a flywheel energy storage system work?

Flywheel Energy Storage Systems (FESS) rely on a mechanical working principle: An electric motor is used to spin a rotor of high inertia up to 20,000-50,000 rpm. Electrical energy is thus converted to kinetic energy for storage. For discharging, the motor acts as a generator, braking the rotor to produce electricity.

What is a flywheel energy storage system (fess)?

Flywheel energy storage systems (FESS) use electric energy input which is stored in the form of kinetic energy. Kinetic energy can be described as “energy of motion,” in this case the motion of a spinning mass, called a rotor. The rotor spins in a nearly frictionless enclosure.

What is the difference between a flywheel and a battery storage system?

Flywheel Systems are more suited for applications that require rapid energy bursts, such as power grid stabilization, frequency regulation, and backup power for critical infrastructure. Battery Storage is typically a better choice for long-term energy storage, such as for renewable energy systems (solar or wind) or home energy storage.

How does a flywheel work?

Here’s a breakdown of the process: Energy Absorption: When there’s surplus electricity, such as when the grid is overproducing energy, the system uses that excess power to accelerate the flywheel. This energy is stored as kinetic energy, much like how the figure skater speeds up their spin by pulling in their arms.



Flywheel energy storage work

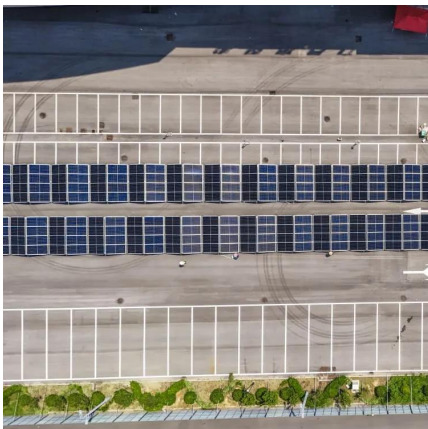


[Decarbonizing Transportation With Flywheel Energy Storage ...](#)

Flywheel energy storage systems (FESS) have emerged as a sophisticated methodology for energy recuperation, power transmission, and eco-friendly transportation. ...

[Flywheel Energy Storage System: What Is It and How Does It ...](#)

To understand how a flywheel energy storage system works, imagine a figure skater performing a spin. When the skater pulls their arms in, they spin faster, storing rotational energy.



[World's largest flywheel energy storage ...](#)

Every 12 units create an energy storage and frequency regulation unit, the firm said, with the 12 combining to form an array connected to the grid at a 110 kV voltage level. Flywheel energy storage ...

[How flywheel energy storage works](#)

A review of energy storage types, applications and recent developments. S. Koochi-Fayegh, M.A. Rosen, in Journal of Energy Storage, 2020 2.4 Flywheel energy storage. Flywheel energy ...



[Flywheel Energy Storage System: What Is It ...](#)

To understand how a flywheel energy storage system works, imagine a figure skater performing a spin. When the skater pulls their arms in, they spin faster, storing rotational energy.



[World's largest flywheel energy storage connects to China grid](#)

Every 12 units create an energy storage and frequency regulation unit, the firm said, with the 12 combining to form an array connected to the grid at a 110 kV voltage level. ...



[China Connects World's Largest Flywheel ...](#)

China has connected its first large-scale, grid-connected flywheel energy storage system to the power grid in Changzhi, Shanxi Province. The Dinglun Flywheel Energy Storage Power Station, with a ...





[China Connects World's Largest Flywheel Energy Storage ...](#)

China has connected its first large-scale, grid-connected flywheel energy storage system to the power grid in Changzhi, Shanxi Province. The Dinglun Flywheel Energy Storage ...



Contact Us

For catalog requests, pricing, or partnerships, please visit:
<https://www.woodgoods.pl>

Scan QR Code for More Information



<https://www.woodgoods.pl>