

Flywheel energy storage kwh





Overview

What is the energy storage capacity of a flywheel?

A steel alloy flywheel with an energy storage capacity of 125 kWh and a composite flywheel with an energy storage capacity of 10 kWh have been successfully developed. Permanent magnet (PM) motors with power of 250–1000 kW were designed, manufactured, and tested in many FES assemblies.

Can flywheel energy storage systems be used for stability design?

The flywheel energy storage systems can be used for stability design in high power impulse load in independent power systems [187, 188]. A combined closed-loop based on the genetic algorithm with a forward-feed control system with fast response and steady accuracy is designed .

What is a flywheel energy storage system (fess)?

As a vital energy conversion equipment, the flywheel energy storage system (FESS) [, , ,] could efficiently realize the mutual conversion between mechanical energy and electrical energy. It has the advantages of high conversion efficiency [6, 7], low negative environmental impact [8, 9], and high power density [10, 11].

How does a flywheel energy storage system work?

Flywheel Energy Storage Systems (FESS) rely on a mechanical working principle: An electric motor is used to spin a rotor of high inertia up to 20,000-50,000 rpm. Electrical energy is thus converted to kinetic energy for storage. For discharging, the motor acts as a generator, braking the rotor to produce electricity.



Flywheel energy storage kwh



[Top 5 Advanced Flywheel Energy Storage Startups in 2025](#)

This energy storage system boasts a significantly lower Levelized Cost of Storage (LCOS), estimated at around 3.8 cents per kWh compared to 11 cents per kWh for lithium-ion ...

[New Flywheel Energy Storage Technology](#)

The high efficiency and high power density of flywheel energy storage technology enable rapid energy release within short time frames. With a service life of several decades ...



[An Overview of the R& D of Flywheel Energy Storage](#)

A steel alloy flywheel with an energy storage capacity of 125 kWh and a composite flywheel with an energy storage capacity of 10 kWh have been successfully developed.

Design, modeling, and validation of a 0.5 kWh flywheel energy storage

The flywheel energy storage system (FESS) has excellent power capacity and high conversion efficiency. It could be used as a mechanical battery in the...



[10 kWh Flywheel Energy Storage: The Overlooked ...](#)

How 10 kWh Flywheel Systems Crack the Storage Code Imagine if we could store energy without chemical degradation - that's where flywheel energy storage shines. These mechanical ...



[Top 5 Advanced Flywheel Energy Storage ...](#)

This energy storage system boasts a significantly lower Levelized Cost of Storage (LCOS), estimated at around 3.8 cents per kWh compared to 11 cents per kWh for lithium-ion batteries. With its simple ...



[Flywheel Energy Storage Cost per kWh: Efficiency Meets ...](#)

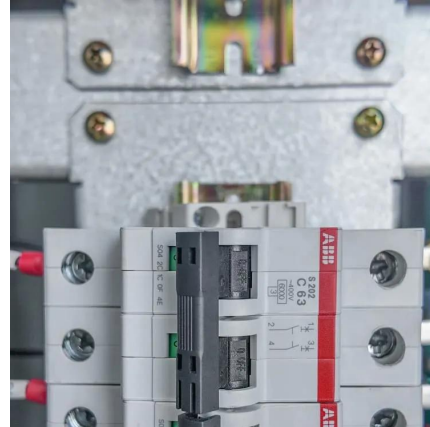
Why Flywheel Storage is Redefining Energy Economics As global industries seek cost-effective energy storage, flywheel systems emerge as game-changers with flywheel energy storage ...





[An Overview of the R& D of Flywheel Energy Storage ...](#)

A steel alloy flywheel with an energy storage capacity of 125 kWh and a composite flywheel with an energy storage capacity of 10 kWh have been successfully developed. ...



Contact Us

For catalog requests, pricing, or partnerships, please visit:
<https://www.woodgoods.pl>

Scan QR Code for More Information



<https://www.woodgoods.pl>