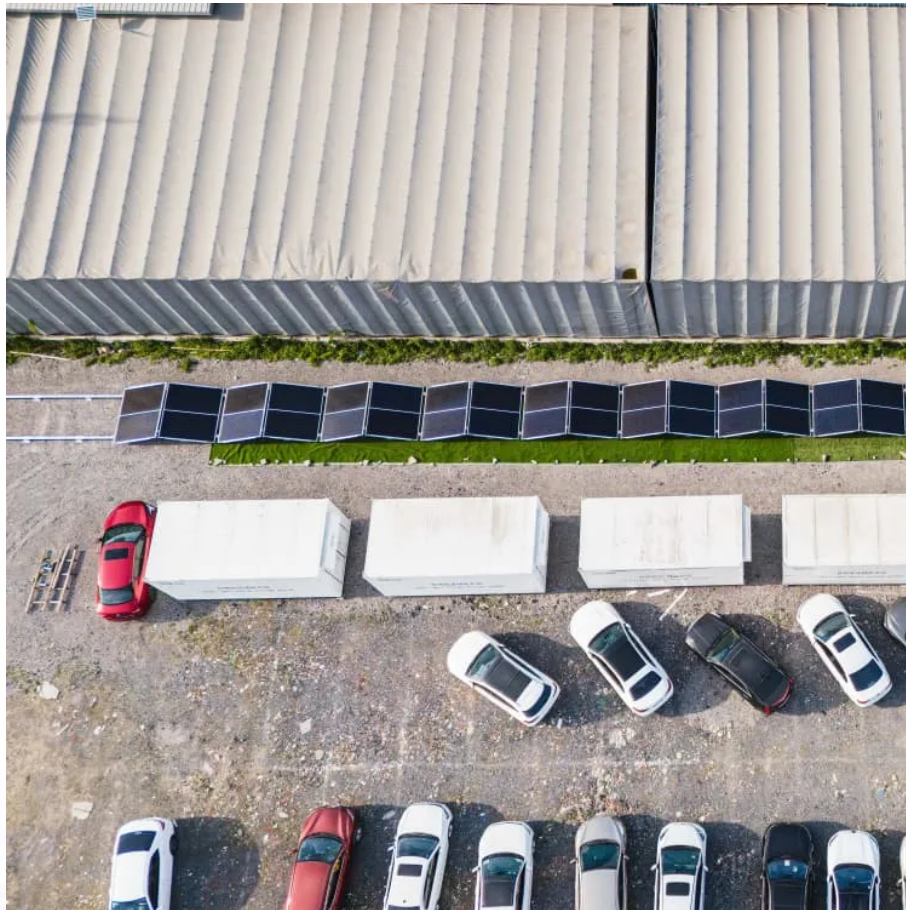


# Energy storage power station requirements for a park





## Overview

---

What are battery storage power stations?

Battery storage power stations are usually composed of batteries, power conversion systems (inverters), control systems and monitoring equipment. There are a variety of battery types used, including lithium-ion, lead-acid, flow cell batteries, and others, depending on factors such as energy density, cycle life, and cost.

What are operation and maintenance plans for energy storage power plants?

Operation and maintenance plans for energy storage power plants cover all key aspects to ensure optimal performance and reliability. Here is a detailed description of its components: Use real-time monitoring systems to track the operating status, battery performance, and charge and discharge efficiency of the energy storage system.

What are the core functions of energy storage power stations?

In addition to these core functions, functions such as anti-backflow protection, support for parallel/off-grid operation, and islanding protection further enhance the reliability and versatility of energy storage power stations.

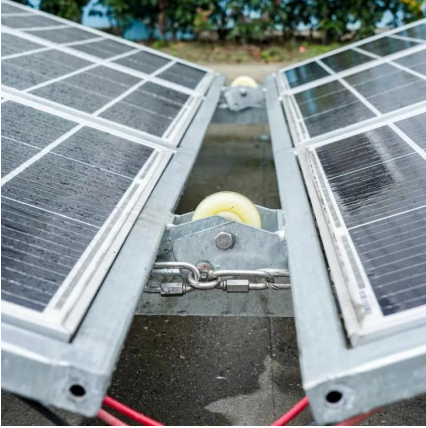
Why is system control important for battery storage power stations?

In addition, the system must hierarchically store data in the database to ensure that the granularity of comprehensive monitoring of the system reaches the minute level. Secondly, effective system control is crucial for battery storage power stations.



## Energy storage power station requirements for a park

---

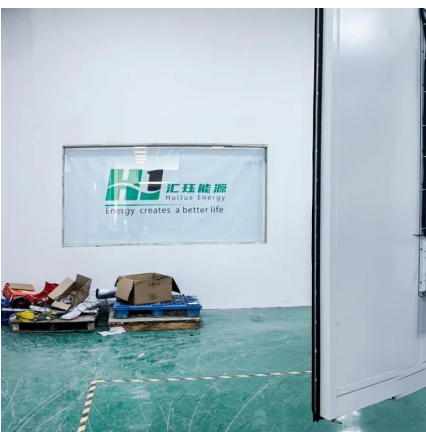


### [Battery storage power station - a comprehensive guide](#)

This article provides a comprehensive guide on battery storage power station (also known as energy storage power stations). These facilities play a crucial role in modern power ...

### [Entire process of developing an energy storage power station ...](#)

Energy storage power stations, acting as "power banks" in the power system, play a crucial role in regulating power supply and demand balance, improving power system flexibility, and ...



### [Energy storage power station land use standards](#)

What are the NFPA requirements for energy storage systems? lightning requirements for energy storage systems. These requirements are designed to ensure adequate visibility for safe ...

### [A study on the energy storage scenarios design and the ...](#)

The cost of building an energy storage station is the same for different scenarios in the Big Data Industrial Park, including the cost of investment, operation and maintenance ...



## Essential Safety Distances for Large-Scale Energy Storage Power Stations

Discover the key safety distance requirements for large-scale energy storage power stations. Learn about safe layouts, fire protection measures, and optimal equipment ...



## [How Much Land Do Energy Storage Power Stations Really ...](#)

As renewable energy capacity surges globally - solar and wind installations grew 18% year-over-year in Q1 2025 - the need for utility-scale energy storage has never been greater. But here's ...



## [Requirements and specifications for the construction of ...](#)

Different ISOs have different minimum size requirements. Some allow systems rated at 10 MW and higher, some at 1 MW. Energy storage or PV would provide significantly ...





## [Energy Storage Power Station Project Land Area: What You ...](#)

The Great Land Swap Opportunity Forward-thinking cities are trading parking lots for power banks. San Diego's "Park & Power" initiative converts underused parking structures ...



## [What to prepare for energy storage power ...](#)

Meticulous planning and execution stand as the bedrock for establishing energy storage power stations. A careful site assessment, a deep understanding of regulatory requirements, advanced engineering ...

## [What to prepare for energy storage power station construction](#)

Meticulous planning and execution stand as the bedrock for establishing energy storage power stations. A careful site assessment, a deep understanding of regulatory ...



## [Construction requirements for photovoltaic energy ...](#)

What is a photovoltaic-energy storage-integrated charging station (PV-es-I CS)? s distributed PV,battery energy storage systems,and What are the requirements for large PV power plants?



## Contact Us

---

For catalog requests, pricing, or partnerships, please visit:  
<https://www.woodgoods.pl>

### Scan QR Code for More Information



<https://www.woodgoods.pl>