

# Does a 12 volt inverter consume electricity





## Overview

---

How much power does a 12 volt inverter use?

There is a simple method to calculate how much power your inverter is using: For 12-volt inverters, divide the connected load by 10; for 24-volt inverters, divide by 20. Example: How much does an inverter consume with a 400 W load connected?

For a 12 V inverter such as a Mass Sine 12/1200, consumption will be  $400/10 = \text{approx. } 40 \text{ amps}$ .

How much power does a 24V inverter draw?

To find out how much power an inverter draws without any load, multiply the battery voltage by the inverter no load current draw. A 1000 watt 24V inverter with a 0.4 no load current has a power consumption of 9.6 watts.  $24V \times 0.4 = 9.6 \text{ watts}$  If you want to figure out the no load current in amps, divide the watts consumption by the battery voltage.

How much power does an inverter use?

An inverter uses a small amount of energy during the conversion process. The difference between the input power and the output power is expressed in percentages. The efficiency of modern inverters is more than 92 %. This means that a maximum of 8 % of the power consumption is used to convert battery voltage to 230V/50Hz.

Should I choose a 12 volt or 24 volt inverter?

When diving into the world of off-grid power systems, RV setups, or backup power solutions, one of the crucial decisions you'll face is choosing between a 12 voltage inverter and a 24 volt inverter. This choice can significantly impact the efficiency, performance, and overall functionality of your power system.



## Does a 12 volt inverter consume electricity



### [How much power does an inverter draw? - Help Centre](#)

Documented in this article are common questions relating to the inverter draw (inverter amp draw or inverter current draw) for 12v (or 24v) batteries. If you're looking for information relating to ...

### [12 Volt DC Power Inverter: In-Depth Learning and Buying ...](#)

Mar 31, 2025 · Discover how a 12-volt DC power inverter works, its applications, and how to choose the best one, Topbull inverters, for reliable and safe power on the go!



### [Inverter loss: 12-volt vs 120-volt energy usage](#)

Dec 27, 2024 · Inverter loss: 12-volt vs 120-volt energy usage As promised here's my battery usage test comparing the run time of a Vitfrigo fridge/freezer on 12-volts DC and a 120-volt ...

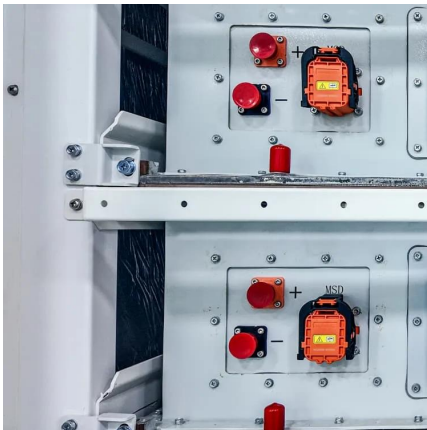
### [Understanding Inverter Power Consumption: Do Inverters ...](#)

Mar 12, 2025 · In today's energy-conscious world, many homeowners and businesses are increasingly turning to energy-efficient solutions, and inverters have become an essential part ...



### [How Much Electricity Does an Inverter Consume During ...](#)

Aug 12, 2025 · Inverters do consume electricity during battery charging, but the amount varies widely. Efficiency losses, battery type, and inverter design all play critical roles.



### [12V Inverter vs 24V Inverter -- What Is The Difference](#)

Dec 11, 2024 · This article will explore the differences between 12v inverter vs 24v inverter, considering factors such as energy loss, battery requirements, and suitability for different ...



## Contact Us

---

For catalog requests, pricing, or partnerships, please visit:  
<https://www.woodgoods.pl>



## Scan QR Code for More Information



<https://www.woodgoods.pl>