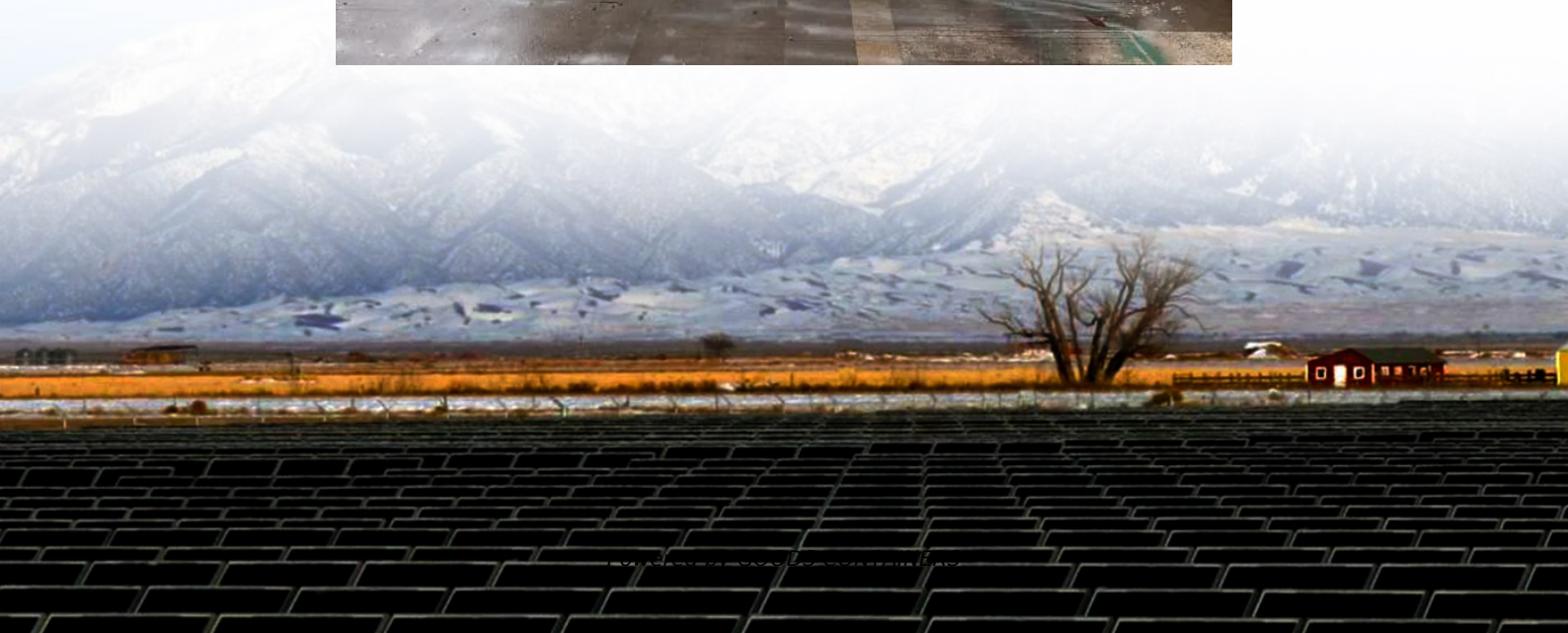


# Do 5G base stations consume power





## Overview

---

The 5G NR standard has been designed based on the knowledge of the typical traffic activity in radio networks as well as the need to support sleep states in radio network equipment. By putting the base sta.

Are 5G base stations causing more energy consumption?

However, Li says 5G base stations are carrying five times the traffic as when equipped with only 4G, pushing up power consumption. The carrier is seeking subsidies from the Chinese government to help with the increased energy usage.

Does 5G increase energy consumption?

However, this technological leap comes with a substantial increase in energy consumption. Compared to its predecessor, the fourth-generation (4G) network, the energy consumption of the 5G network is approximately three times higher .

How much power does a 5G base station use?

“A 5G base station is generally expected to consume roughly three times as much power as a 4G base station. And more 5G base stations are needed to cover the same area,” -IEEE Spectrum, 5G’s Waveform Is a Battery Vampire.

How will 5G affect the energy consumption of mobile operators?

Edge compute facilities needed to support local processing and new internet of things (IoT) services will also add to overall network power usage. Exact estimates differ by source, but MTN says the industry consensus is that 5G will double to triple energy consumption for mobile operators, once networks scale.



## Do 5G base stations consume power

---

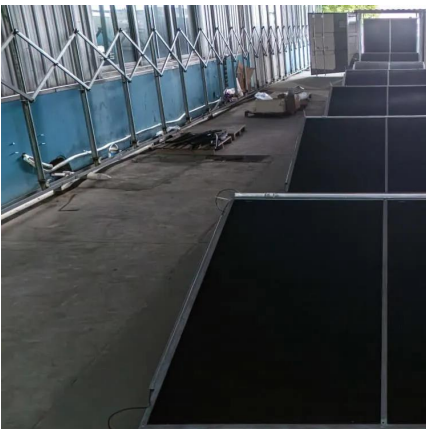


### [Modelling the 5G Energy Consumption using Real-world ...](#)

Sep 15, 2025 · Accurate energy consumption modeling is essential for developing energy-efficient strategies, enabling operators to optimize resource utilization while maintaining network ...

### [Power consumption based on 5G communication](#)

Oct 17, 2021 · At present, 5G mobile traffic base stations in energy consumption accounted for 60% ~ 80%, compared with 4G energy consumption increased three times. In the future, high ...



### [Optimal energy-saving operation strategy of 5G base station ...](#)

Dec 1, 2025 · Under full-load conditions, the power consumption of 5 G base stations is approximately 3-4 times that of 4 G base stations, which has a notable impact on energy ...

### [Energy Consumption of 5G, Wireless Systems and the Digital ...](#)

6 days ago · "A 5G base station is generally expected to consume roughly three times as much power as a 4G base station. And more 5G base stations are needed to cover the same area," ...



### [Why does 5g base station consume so much power and how ...](#)

Apr 3, 2025 · The power consumption of the 5G base station mainly comes from the AU module processing and conversion and high power-consuming high radio frequency signals, the ...



### [5G base stations use a lot more energy than 4G base stations...](#)

Apr 3, 2020 · However, Li says 5G base stations are carrying five times the traffic as when equipped with only 4G, pushing up power consumption. The carrier is seeking subsidies from ...



## Contact Us

---

For catalog requests, pricing, or partnerships, please visit:  
<https://www.woodgoods.pl>



## Scan QR Code for More Information



<https://www.woodgoods.pl>