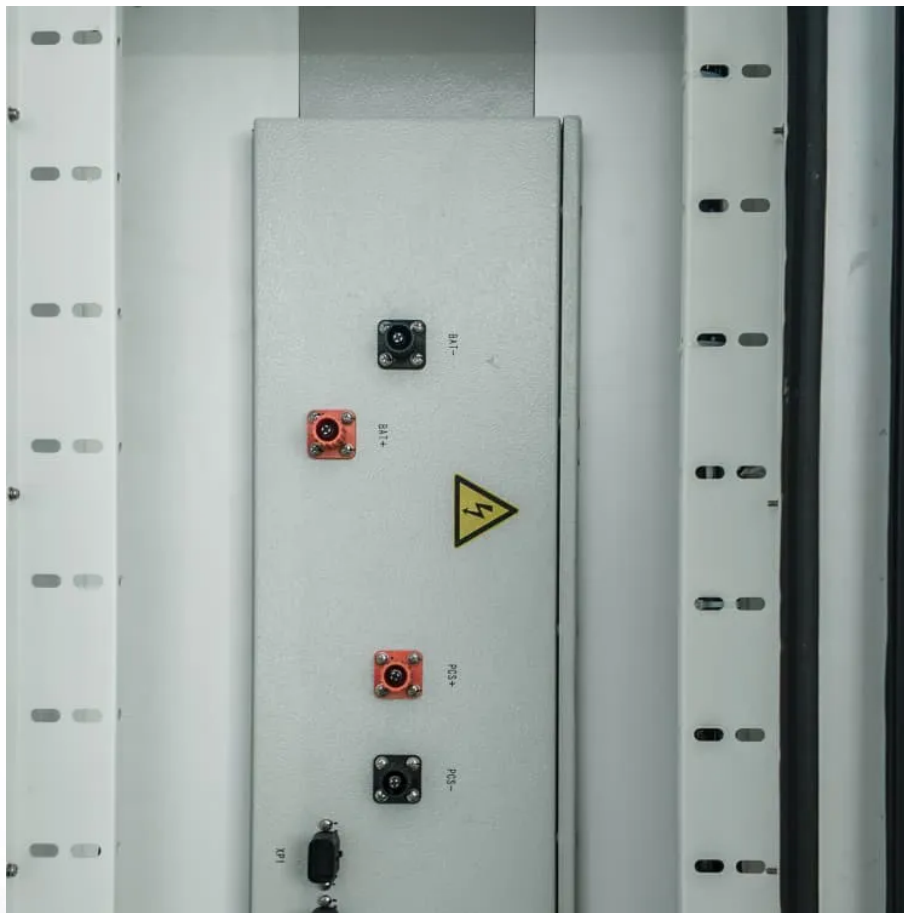


Commonly used outdoor micro base stations





Overview

What is a micro base station?

It is usually set up in densely populated areas such as indoors, office buildings, shopping malls, subway stations, etc. to provide better signal coverage and capacity support. Micro base stations can enhance the quality and stability of wireless signals and provide higher data transmission speeds and lower latency.

How many types of base stations are there?

Macro cell, Micro cell, Pico cell and Femto cell are 4 types of base stations in wireless communication networks. Macrocell antennas must be properly mounted on ground-based masts, rooftops or other existing structures and at heights for an unhindered, clear view of the surroundings.

What is an outdoor macro base station?

This outdoor macro base station supports both GSM-R and LTE — the ideal solution for railways that want to prepare for evolution to an LTE broadband network. One of the most compact outdoor macro base stations in the industry, it features a large, scalable capacity and multi-mode applications that meet the requirements of long-distance railways.

What is a base station?

Base stations are one of the widely used components in the field of wireless communication and networks. It is an access point or base point of a particular area for network accessibility. In this article, we will discuss the different types of base stations with their advantages and applications in the real world.



Commonly used outdoor micro base stations



Cellular Micro Base Station Antennas for Coverage Expansion

Types of External Antennas Used for Micro Base Stations 1. Omni-Directional Antennas (360° Coverage) Best for: Expanding range in outdoor public spaces. Providing ...

CableFree Outdoor 4G & 5G LTE SDR Small Cell Base Station

Experience CableFree's 4G & 5G LTE Small Cell outdoor base stations with software-defined radio for great flexibility, high performance & low operation costs.



Cellular Micro Base Station Antennas for ...

Types of External Antennas Used for Micro Base Stations 1. Omni-Directional Antennas (360° Coverage) Best for: Expanding range in outdoor public spaces. Providing uniform coverage in shopping malls, ...

5G Micro Base Stations in the Real World: 5 Uses You'll

As 5G technology continues to evolve, one of the most significant advancements is the



deployment of micro base stations. These compact, high-capacity units are transforming ...

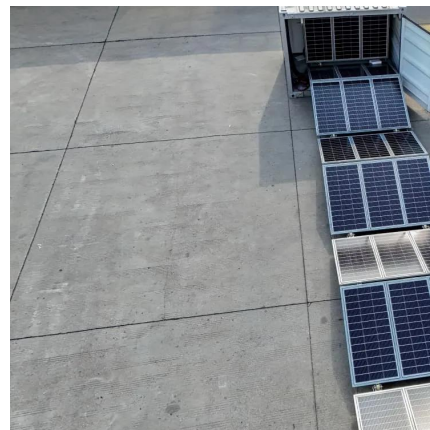


[Research and application of micro base stations in LTE ...](#)

In actual site construction, you can also use your own medium-low gain antenna or an external 15dBi/17dBi antenna to complete the construction of micro base stations. Watt ...

[Integrated outdoor Micro station](#)

The statistics show that the vast majority of data services occur in indoor or hot spots. Small Cell base stations (BS) effectively enhance the deep coverage, increase the network capacity, and ...



[Can micro base stations be used outdoors?](#)

A micro base station is a relatively small-scale base station with a smaller coverage area than a macro base station. It is usually set up in densely populated areas such as indoors, office ...



Contact Us

For catalog requests, pricing, or partnerships, please visit:
<https://www.woodgoods.pl>

Scan QR Code for More Information



<https://www.woodgoods.pl>