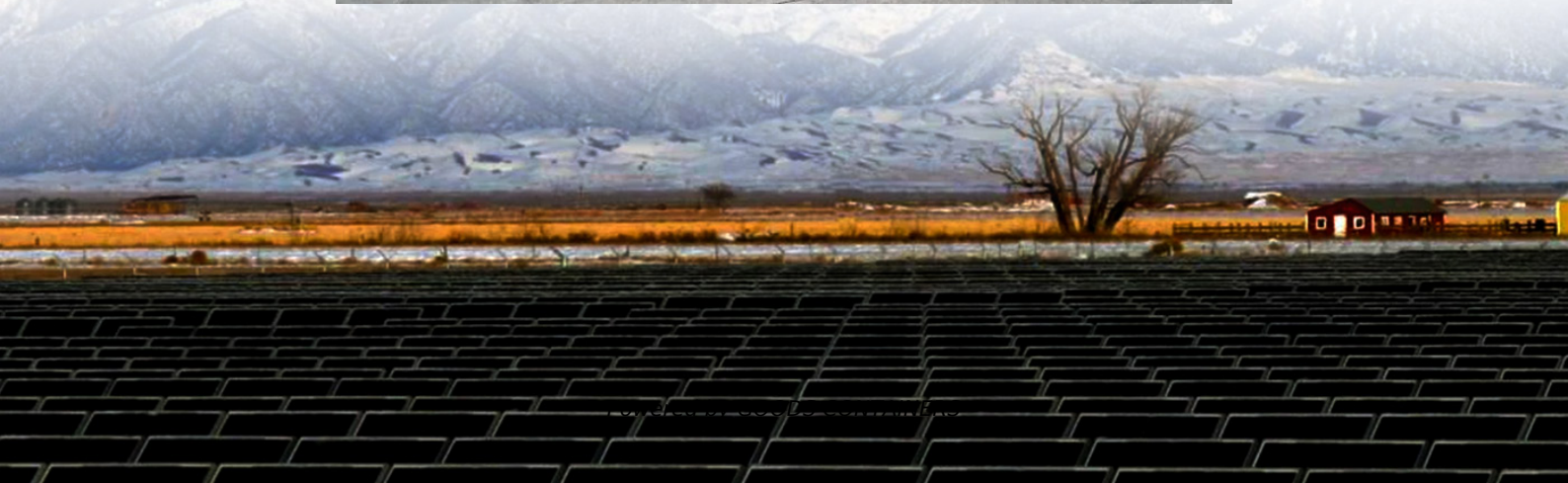


Charging pile base station power installation specifications





Overview

What does a modern AC charging (pile) station require?

Modern AC charging (pile) stations require: Faster, more efficient electric vehicle charging. Real-time energy monitoring and connections to the grid. Seamless billing options for drivers and operators. Find products and reference designs for your system.

How to install a charging pile?

Lay the power cord according to the wire diameter requirements, align the pile body with the holes, place it on the cement base, and tighten it with M12X70 bolts. 4. Connect the input cable, and check whether the charging pile has an overcurrent, short circuit, lightning strike, or other protection devices.

Can a charging pile be installed & maintained?

The charging pile installation and maintenance could only be operated by qualified electric engineers. Maintenance and inspection must not be carried out until discharge is confirmed complete after the main circuit is disconnected. Do not use the direct current charging pile which has been damaged or has faulty parts.

What is a charging pile?

Charging piles of this type are designed for outdoor floor types with waterproof, dustproof and corrosion proof function and have environmental protection design with protection grade of IP 54. 2. Product Model Specification 3. Normative Reference and Specification 4. Environmental Conditions 5. Electric Characteristics



Charging pile base station power installation specifications



Electrical Design Specifications and Safety Requirements of Charging

Electrical design specifications are crucial in the proper functioning of charging pile stations. These specifications outline the technical requirements and standards that need to be met to ...

[CT4000 Make-Ready Requirements Specification](#)

Feb 21, 2023 · Introduction This document provides best practices and guidelines for preparing a site to install EV charging stations (Make-Ready). "Make-ready" means that all necessary ...



[Comprehensive Guide: Charging Station Installation Process](#)

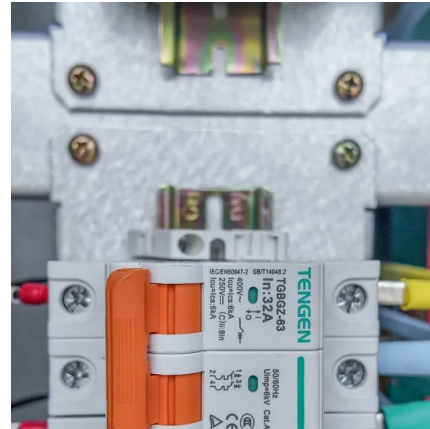
Nov 17, 2025 · The installation of an electric vehicle charging station is a systematic process that can be divided into four main phases: Site Preparation & Foundation Work, Concrete ...

[Charging pile installation construction process design](#)

1. Analysis of common problems in charging pile installation Although the number of charging pile facilities has gradually increased in recent years,



and most gas stations will provide electric ...



[Construction and technical requirements of charging piles](#)

Mar 2, 2023 · The input end of the charging pile is directly connected to the AC grid, and the output end is equipped with a charging plug for charging the electric vehicle.

[User's Manual of EKEC series AC electric vehicle charging ...](#)

Aug 10, 2022 · This product is a single or three-phase AC charging pile, which is mainly used for AC charging of electric vehicles. The equipment adopts industrial design principles. The ...



Contact Us

For catalog requests, pricing, or partnerships, please visit:
<https://www.woodgoods.pl>



Scan QR Code for More Information



<https://www.woodgoods.pl>