

Can the inverter use a 16v battery





Overview

How many volts does a 16V inverter have?

There is no specific 16V inverter, so I purchased 3 different 12V-24V inverters which also took into account any voltage variation. I tested both the front/rear 16V outlets getting anywhere from 14.2V - 15.7V depending on the battery voltage.

Can a 12V battery be used as an inverter?

If you are using a 12V battery, then the input voltage of the inverter must match the battery voltage. If the specifications of the battery and the inverter do not match, the system will not operate stably and may even damage the equipment. In addition, choose the right inverter power and battery capacity for your home or commercial needs.

Do inverters and batteries need to match?

The inverter and batteries must match in terms of voltage, capacity, and power output. If you are using a 12V battery, then the input voltage of the inverter must match the battery voltage. If the specifications of the battery and the inverter do not match, the system will not operate stably and may even damage the equipment.

Do inverters need to be connected to batteries?

Connecting inverters to batteries is an important part of an off-grid power solution or backup power system, and the right connections ensure that the system runs efficiently.



Can the inverter use a 16v battery



[How Inverters Work with Batteries: A Beginner's Complete ...](#)

The inverter can temporarily draw extra energy from the battery during these peak moments, enhancing the system's versatility and usability. In conclusion, the battery plays an ...

[Any 16V compatible portable power stations? , Tesla Motors ...](#)

I also have a BESTEK 150 power inverter. BESTEK informed me that my inverter is not compatible with Tesla's 16V outlet. I figured I would just pickup a Jackery, EcoFlow, etc. ...

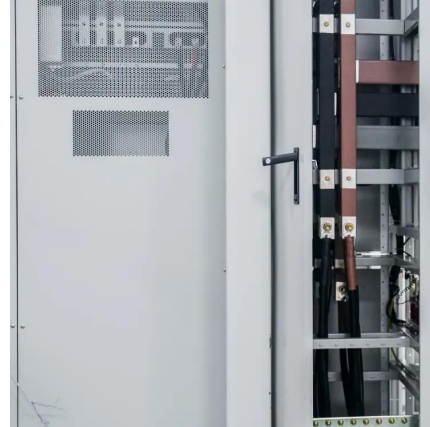


[Can I Use A Car Battery For Inverter?](#)

So, buckle up and get ready to explore the exciting possibilities of harnessing the power of your car battery for your inverter needs. Understanding the Basics of Car Batteries ...

[Power Inverters for newer 16V Outlet Cars , Tesla Motors Club](#)

There is no specific 16V inverter, so I purchased 3 different 12V-24V inverters which also took into account any voltage variation. I tested both the front/rear 16V outlets ...



[How to Connect an Inverter to a Battery: Step-by-Step Guide ...](#)

Learn how to safely and efficiently connect an inverter to a battery with our step-by-step guide. Includes brand-specific tips for Solis, Deye, Megarevo, SRNE, and more. Perfect ...



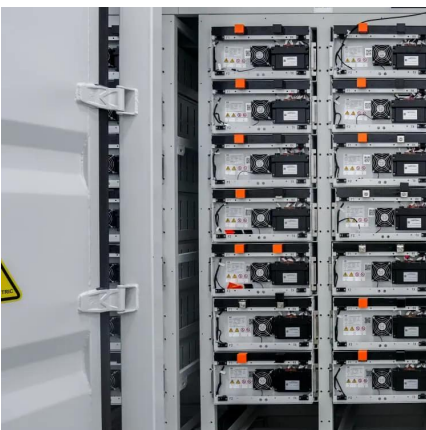
[Can I Attach My Small Inverter Directly to the Battery?](#)

Yes, you can attach a small inverter directly to a battery, but doing it safely requires understanding voltage compatibility, wire sizing, and overload risks. Many DIYers assume it's ...



[How to Connect an Inverter to a Battery: Step ...](#)

Learn how to safely and efficiently connect an inverter to a battery with our step-by-step guide. Includes brand-specific tips for Solis, Deye, Megarevo, SRNE, and more. Perfect for DIY enthusiasts and ...





Battery connection for inverter

An battery connection for inverter is made in a diligent way to achieve proper operation, life span and safety constraint. This article enlightens the features, risks and battery connection for inverter along ...



Can a 12 Volt Inverter Use a 16V Battery Compatibility Safety ...

SunContainer Innovations - Summary: Wondering if your 12V inverter can handle a 16V battery? This guide explains compatibility factors, safety precautions, and real-world applications. Learn ...

Contact Us

For catalog requests, pricing, or partnerships, please visit:
<https://www.woodgoods.pl>

Scan QR Code for More Information



<https://www.woodgoods.pl>