

Can the inverter be plugged into a 220 volt power supply





Overview

What is a 12V DC to 220V AC inverter?

Inverters (sometimes called power inverters) are just a class of electronic devices called power electronics that convert direct current into alternating current. Scientifically speaking, the transformer in an inverter must have a 1:19 turn ratio in order to convert 12V DC to 220V AC.

What is a 220V power inverter?

A 220 volt power inverter converts direct current to conventional alternating current. It can be used to run electronic equipment when there is no normal power supply. Sam Stores stocks a wide range of power inverters to match your needs.

Can a 12V battery run a 220V AC?

The result is that the 12V DC input becomes 220V AC output. PowMr Store's inverter converts DC power from a 12V battery system to AC power, which can power your home electrical equipment properly and can run a variety of 220V appliances such as refrigerators, air conditioners, and televisions, etc.

What are the advantages of a 12V to 220V inverter?

Sufficient power: When the rated load power equal to or less than inverter power, the inverter will not produce overload protection and can go on working. Good safety performance: The 12v to 220v inverter features in short-circuit, overload, overvoltage, under-voltage, over-temperature protections.



Can the inverter be plugged into a 220 volt power supply

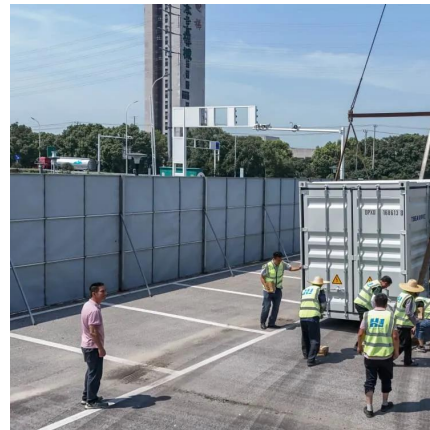


[Best 220 Volt Power Inverters for Cars, Homes, and Solar ...](#)

Aug 22, 2025 · Choosing the right 220 volt power inverter can make a big difference when powering your electronics on the go or at home. Whether you need an inverter for your car, ...

[What Happens When You Use 120V Into A 220V Outlet?](#)

Oct 1, 2023 · Why You Should Never Mix 120V and 220V Power All electrical appliances and devices have a designed operating voltage - usually either 120V or 220-240V. This voltage ...



[How to Choose the Best Inverter 24V to 220V for Your Power ...](#)

4 days ago · About Inverter 24V 220V An inverter 24V to 220V converts direct current (DC) from a 24-volt battery system into alternating current (AC) at 220 volts, making it suitable for running ...



[220 Volt Inverter: The Ultimate Guide to Choosing the Right ...](#)

May 23, 2025 · The Ultimate Guide to 220 Volt Inverters In today's world, reliable power sources are essential for both home and outdoor activities. One solution that has gained popularity is ...



[220-volt Inverter - Compatible with All Electronic Devices](#)

Jun 6, 2016 · A 220-volt inverter can change the electric current of electronic devices to be able to work on 110 power outlets. The best types of inverters usually have one universal outlet.



[How to Link Two Inverters Together to Get 220V AC](#)

Dec 4, 2025 · Most power inverters are designed to convert 12-volt, 24-volt, or 48-volt DC to 120-volt AC. These inverters are commonly used in recreation vehicles and solar power systems.

...



[How does a 12V to 220V Inverter Work?](#)

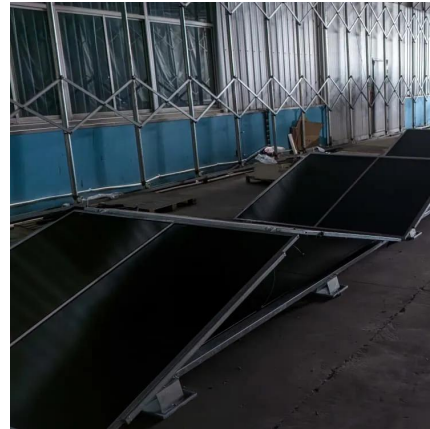
Jun 11, 2022 · A converter is an electrical device that converts the supply voltage from AC to DC. Simply put, an RV inverter converts DC to AC power and an RV converter converts AC to DC ...





[Understanding the Basics: How a 12V to 220V Inverter Works ...](#)

Sep 2, 2024 · What is a 12V to 220V Inverter? A 12V to 220V inverter is an essential device that converts direct current (DC) from a 12V battery into alternating current (AC) at 220V. This ...



Contact Us

For catalog requests, pricing, or partnerships, please visit:
<https://www.woodgoods.pl>

Scan QR Code for More Information



<https://www.woodgoods.pl>