

# **Can a 60V inverter with 48V be used**





## Overview

---

Do 48V power inverters work?

48V power inverters work perfectly in 48V solar systems, which are usually either small commercial or large residential. These inverters are typically paired with 48V PV modules and batteries of a comparable voltage.

Do I need a 12V or 48V inverter?

Simply put, if you have a 12V system, you need a 12V inverter; a 48V system requires a 48V inverter. Standard Pure Sine Wave inverters simply change DC power to AC power. Inverter Chargers handle this function plus allow you to charge your batteries off shore power or a generator. Renogy's 3500W Solar Inverter Charger is designed for a 48V system.

Can a 60V battery power a 48V motor?

A 48V motor is designed to handle 48 volts of electrical input. When considering using a 60V battery on a 48V motor, compatibility is an important factor.

Should I use a 60V to 48V converter?

If you want to use all the remaining cells a "dc to dc converter 60V to 48V" would do just that. However they are hard to get for that voltage and high amps. if your controller can take 60v it will be fine just keep an eye on motor temps and avoid WOT if you find it gets hot Dana Point So. Cal It's. Best to have one big battery.



## Can a 60V inverter with 48V be used

---

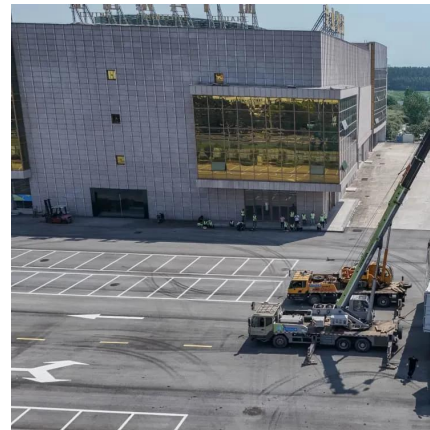


### [Can a 60V Inverter Work with a 48V Battery Compatibility ...](#)

Meta description: Discover whether a 60V inverter can safely operate with a 48V battery. Learn voltage conversion principles, real-world applications, and solutions for hybrid solar systems.

### [Can a 60V Battery and 48V Inverter Be Used Together](#)

Summary: Wondering if a 60V battery can work with a 48V inverter? This article explores voltage compatibility, practical solutions, and safety tips for hybrid energy systems. Learn how to ...



### [How to use a 60v battery pack on 48v motor](#)

May 2, 2017 · Hello everyone :D, I have a 60v battery pack and I wanted to use it on a 48v motor without burning the motor. What options do i have? How can i step it down? will it burn the ...

### [Can a 48V inverter be used when plugged into a 60V inverter](#)

Using a 60V inverter with a 48V system is technically possible, but it comes with several risks and considerations: Overheating: Operating a 48V motor at 60V can lead to overheating ...



### [CAN A 48V INVERTER BE USED WHEN PLUGGED INTO A 60V INVERTER](#)

Inverter 48v to 220v8000 The 800W modified sine wave inverter, converting 48VDC to 220VAC with an output power of 800W and a peak power of 1600W, this inverter efficiently converts DC ...



### [Is it permissible to use a 60V battery with a 48V motor?](#)

Jan 5, 2024 · This can lead to higher RPMs, which may exceed the motor's design specifications, potentially causing overheating or damage if not managed properly. Controller Ratings: The ...



## Contact Us

---

For catalog requests, pricing, or partnerships, please visit:  
<https://www.woodgoods.pl>



## Scan QR Code for More Information



<https://www.woodgoods.pl>