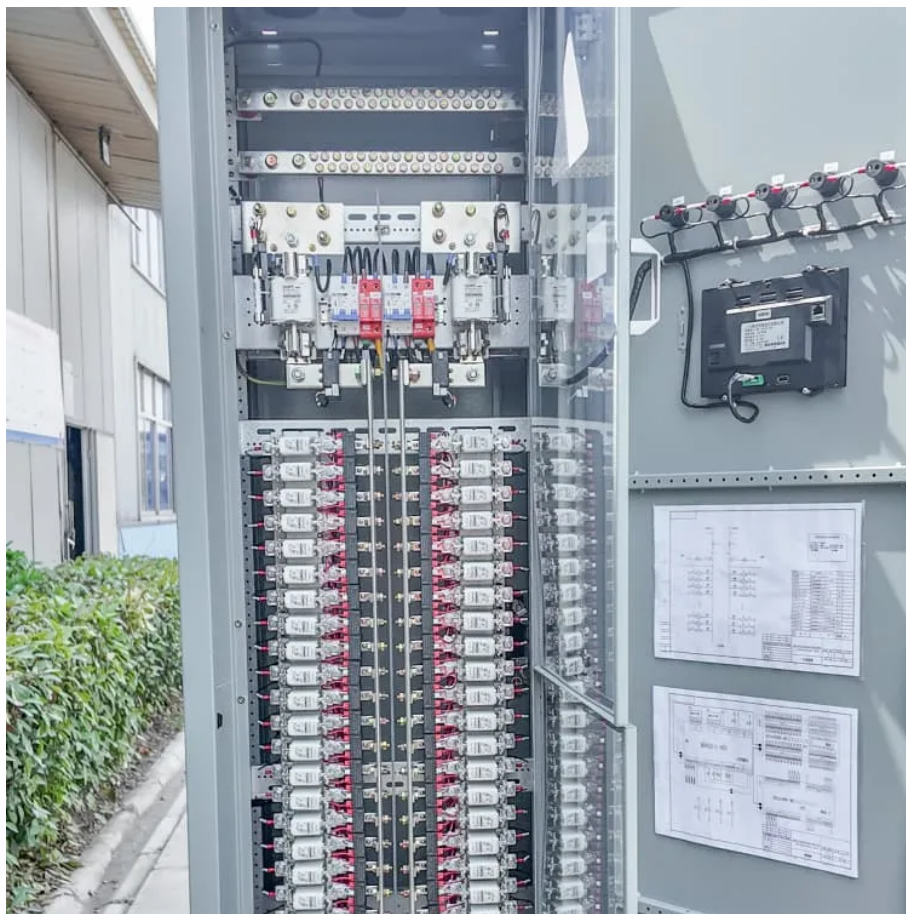


# Battery inverter capacity





## Overview

---

How many batteries in a solar inverter?

For example, if your required battery capacity is 20,000 Ah and you choose a battery with a capacity of 200 Ah, you would need  $20,000 \text{ Ah} / 200 \text{ Ah} = 100$  batteries in your bank. [How to Calculate Your Solar Inverter Size?](#)

Inverters have two important power ratings: continuous power rating and peak power rating.

What is the capacity of an inverter battery?

The capacity of an inverter battery, measured in ampere-hours (Ah), determines how much power it can store and supply over time. A higher Ah rating means the battery can provide backup power for a longer duration before requiring a recharge. The basic formula for calculating battery capacity is:.

What is the recommended battery size for an inverter?

Interpreting Results: Once you input the required data, the calculator will generate the recommended battery size in ampere-hours (Ah). For instance, if your power consumption is 500 watts, the usage time is 4 hours, and the inverter efficiency is 90%, the calculator might suggest a battery size of approximately 222 Ah.

What wattage Inverter should I use?

Match the inverter's continuous wattage rating to the battery's discharge capacity. For a 12V 200Ah battery (2.4kWh), a 2000W inverter is ideal. Formula:  $\text{Inverter Wattage} \leq (\text{Battery Voltage} \times \text{Ah Rating} \times 0.8)$ . Factor in surge power needs but prioritize sustained loads.



## Battery inverter capacity

---



### [How to Calculate Solar Panel, Battery, and Inverter Size](#)

Dec 28, 2023 · For example, if your required battery capacity is 20,000 Ah and you choose a battery with a capacity of 200 Ah, you would need  $20,000 \text{ Ah} / 200 \text{ Ah} = 100$  batteries in your ...

### **How to Calculate the Right Inverter Battery Capacity for Your ...**

Feb 24, 2025 · Learn how to calculate the right inverter battery capacity for your needs with a simple formula. Understand power requirements, efficiency losses, and the best battery types ...



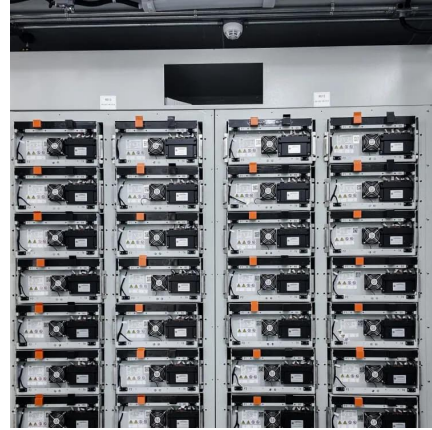
### [Calculate Battery Size for Inverter Calculator](#)

Mar 14, 2025 · The Calculate Battery Size for Inverter Calculator helps you determine the optimal battery capacity needed to support your inverter system. By inputting critical parameters such ...



### [Large-Scale Battery Inverter and Energy Capacity Sizing for ...](#)

Apr 5, 2025 · Thus, it is important to minimise the size of the battery while ensuring system security requirements are fulfilled. In this paper, a large-scale BESS sizing framework is ...



### [Can an Inverter Be Too Big for Your Battery System?](#)

How to Calculate the Right Inverter Size for Your Battery Match the inverter's continuous wattage rating to the battery's discharge capacity. For a 12V 200Ah battery (2.4kWh), a 2000W inverter ...



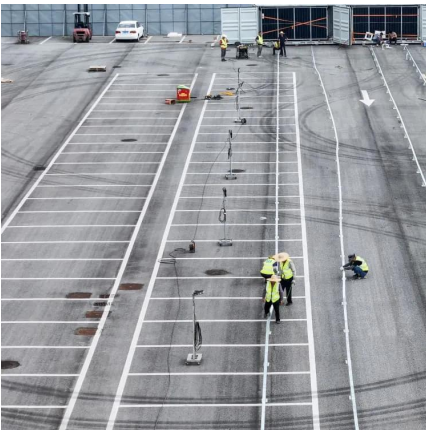
### [Battery Size Calculator for Solar & UPS Systems . SurgePV](#)

4 days ago · Calculate your ideal battery bank size with SurgePV's free Battery Size Calculator. Instantly estimate required inverter capacity, total energy demand, and battery Ah based on ...



### [Calculate Battery Size For Any Size Inverter \(Using Our...](#)

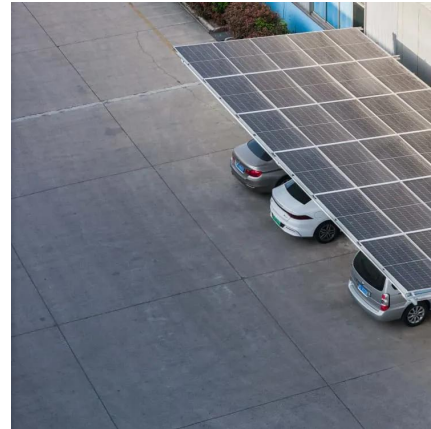
Mar 3, 2023 · Battery size chart for inverter Note! The input voltage of the inverter should match the battery voltage. (For example 12v battery for 12v inverter, 24v battery for 24v inverter and ...





### [How to Calculate the Right Battery Size for Your Inverter ...](#)

Determine Battery Configuration Fix that how many batteries you require to get the required capacity. Batteries can be connected in series to increase voltage or in parallel to increase ...



## Contact Us

---

For catalog requests, pricing, or partnerships, please visit:  
<https://www.woodgoods.pl>

### Scan QR Code for More Information



<https://www.woodgoods.pl>