

Battery 51 2v can be matched with 48v inverter





Battery 51.2V can be matched with 48V inverter

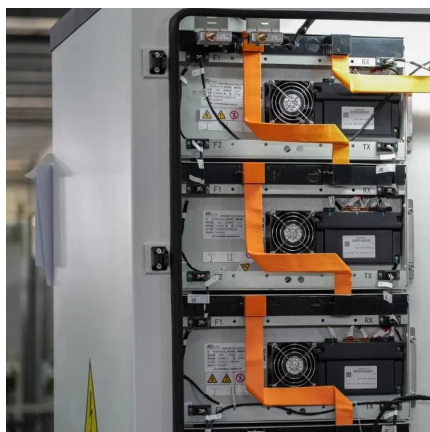


[48V 10kWh and 51.2V 10kWh lithium-ion battery difference ...](#)

The 51.2V battery is a standard module consisting of 16 strings of LiFePO4 cells (16S x 3.2V). The "48V battery" is a generalized term, which may be 14 strings of 3.2V ...

[51.2V LiFePO4 vs 48V: Which Battery Voltage Powers Your ...](#)

Voltage impacts performance and compatibility. Understanding the differences is essential for any battery-powered system. 51.2V LiFePO4 batteries use 16 cells, delivering ...



[What's The Difference Between 48V And 51.2V Batteries?](#)

Technical specifications reveal 51.2V systems operate within 44.8-58.4V ranges versus 48V's 42-54.6V. This expanded window supports deeper discharge cycles (90% DoD ...

[What is The Difference Between 48V and 51.2V LiFePO4 Batteries?](#)

Among the various types of LiFePO4 batteries, 48V and 51.2V batteries are often compared,



especially in residential and commercial applications. In this article, we'll delve into ...



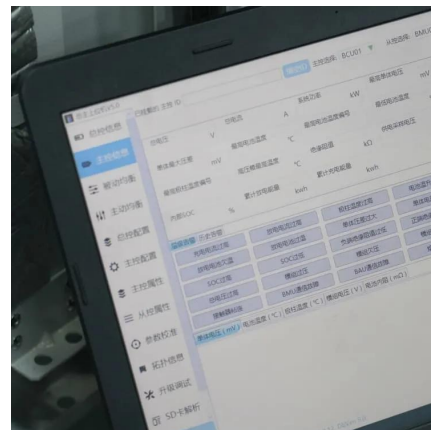
[48V vs 51.2V LiFePO4 Batteries: What's the Difference?](#)

Discover the key differences between 48V and 51.2V LiFePO4 batteries. Learn how these variations affect performance, capacity, and compatibility to help you make the best ...



48v and 51.2v LFP together in parallel / smart shunt vs inverter ...

Thinking of expanding my system to around 400ah, I'm now left wondering: am I locked into more of the same 48v, 4800Wh batteries, or can I actually safely pair them with ...



[Difference Between a 48 Volt Lithium Ion Battery and a 51.2V ...](#)

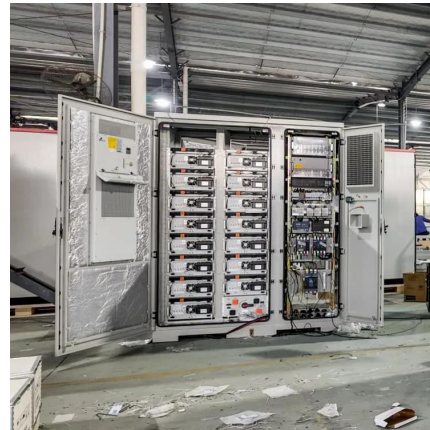
Nowadays, many people find themselves confused when deciding between a 48V lithium LiFePO4 battery and a 51.2V lithium LiFePO4 battery. At first glance, the voltage ...





[48v and 51.2v LFP together in parallel / smart ...](#)

Thinking of expanding my system to around 400ah, I'm now left wondering: am I locked into more of the same 48v, 4800Wh batteries, or can I actually safely pair them with 51.2v, 5120Wh LFP batteries? ...



[Difference Between a 48 Volt Lithium Ion ...](#)

...

Nowadays, many people find themselves confused when deciding between a 48V lithium LiFePO4 battery and a 51.2V lithium LiFePO4 battery. At first glance, the voltage difference might seem ...

[48V vs 51.2V LiFePO4 Batteries: What's the ...](#)

Discover the key differences between 48V and 51.2V LiFePO4 batteries. Learn how these variations affect performance, capacity, and compatibility to help you make the best choice for your power storage ...



[48V 10kWh and 51.2V 10kWh lithium-ion ...](#)

...

The 51.2V battery is a standard module consisting of 16 strings of LiFePO4 cells (16S x 3.2V). The "48V battery" is a generalized term, which may be 14 strings of 3.2V LiFePO4 or 13 strings of 3.7V ...



48V vs 51.2V LiFePO4 Batteries: Key Differences and ...

Battery voltage represents the difference in electrical potential and is the key physical quantity that drives current flow. For lithium iron phosphate batteries, the standard ...



Contact Us

For catalog requests, pricing, or partnerships, please visit:
<https://www.woodgoods.pl>

Scan QR Code for More Information



<https://www.woodgoods.pl>