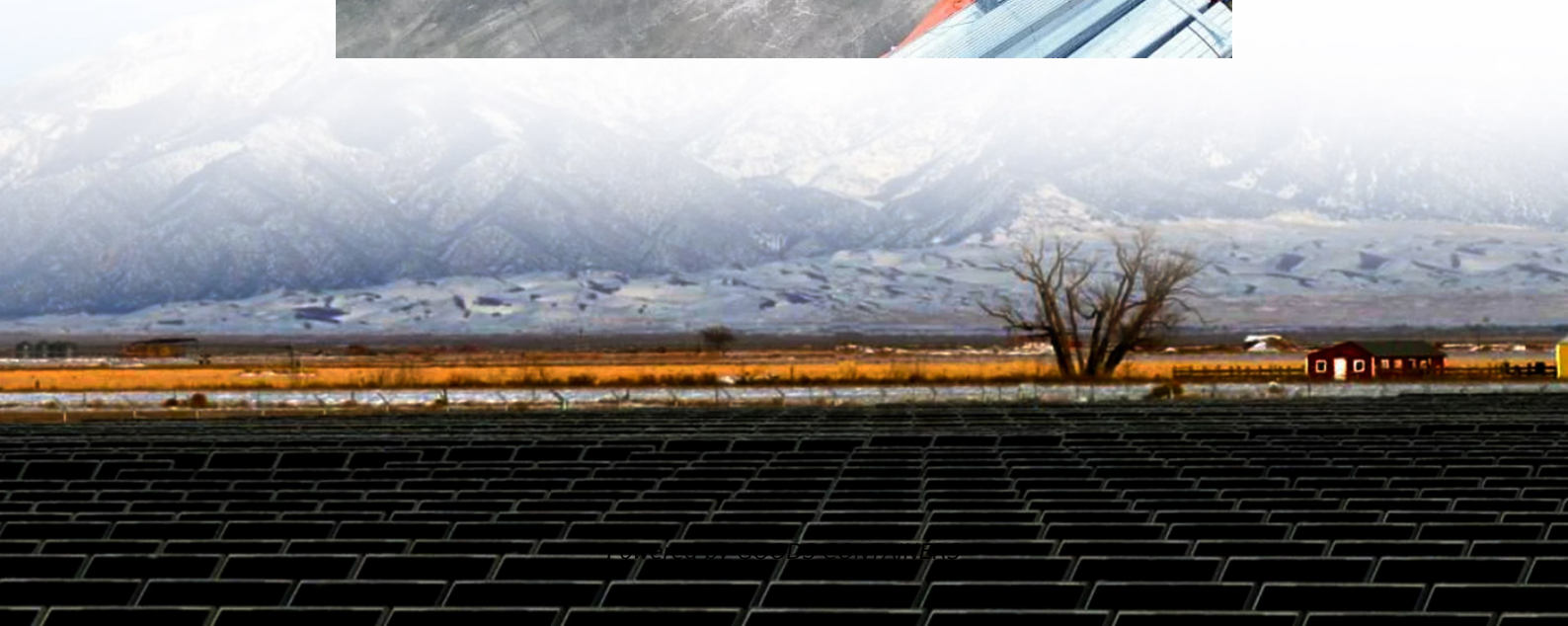


Base station power supply output voltage range





Overview

What is the output power of a base station?

Output power of the Base Station is the mean power delivered to a load with resistance equal to the nominal load impedance of the transmitter. The maximum total output power, P_{max} , of the Base Station is the mean power level measured at the antenna connector during the transmitter ON period in a specified reference condition.

What is BS output power limit?

The BS output power limit of 43 dBm shall be considered as shared among all NB-IoT carriers in the 728-729 MHz frequency range or as the maximum value per NB-IoT carrier in the case where only one NB-IoT carrier is deployed in 728-729 MHz frequency range. The minimum requirement is in TS 37.104 clause 6.2.1.

What is a low profile power supply?

Low profile power supply design usually includes printed circuit board (planar) power transformers and output inductors and surface mount input and output capacitors. Multiple output power supplies are often implemented with a multi-output flyback converter.

Do base stations need smart power management?

The imperative here is to operate base stations that can flexibly adjust to traffic demand. Certainly, the transition to and deployment of 5G communications has an inherent requirement for adoption of smart power management in the underlying hardware.



Base station power supply output voltage range



[Power Supplies for Outdoor 5G Base Station Application](#)

Note: Terminal type with Charger function by programmer or PMbus/CANbus setting. The HEP-1000-W series is also designed with power supply and charging functions. ...

[Communications System Power Supply Designs](#)

The power factor corrected (PFC) AC/DC produces the supply voltage for the 3G Base station's RF Power amplifier (typ. +27V) and the bus voltage for point-of-load converters.



[6.2 Base Station output power - TechSpec](#)

The rated carrier output power of the BS shall be as specified in Table 6.2-1. Table 6.2-1: Base Station rated carrier output power In addition, for Band 85 NB-IoT standalone operation, the ...

[MORNSUN Telecom Power Supply Selection Guide](#)

Mornsun's LMS800-P12B series is AC/DC power supply specialized for servers, it supports a hot plug, cooling fan, and intelligent backup function, is suitable for the harsh ...



Communication Base Station Smart Hybrid PV Power ...

Output voltage: nominal value And the adjustable range of output voltage protection and Output short Circuit protection Output Over-voltage protection and Reverse ...



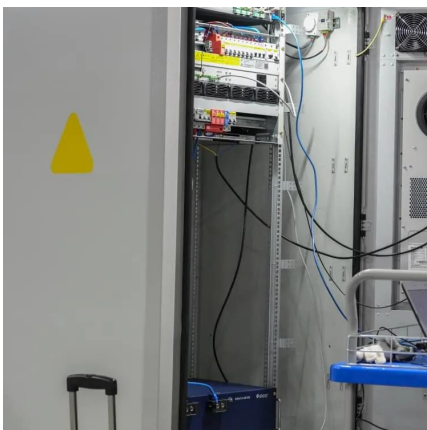
Selecting the Right Supplies for Powering 5G Base Stations

Additionally, these 5G cells will also include more integrated antennas to apply the massive multiple input, multiple output (MIMO) techniques for reliable connections. As a result, a ...



Battery output voltage range for communication base ...

This translates to lower replacement frequency and maintenance costs. Wide Temperature Range LiFePO4 batteries operate reliably in temperatures ranging from -20°C to ...





Improving RF Power Amplifier Efficiency in 5G Radio ...

Base Transceiver Station A base station comprises multiple transceivers (TRX); each TRX comprises a radio-frequency (RF) power amplifier (PA), an RF small-signal section, ...



Power Supplies for Outdoor 5G Base Station ...

Note: Terminal type with Charger function by programmer or PMbus/CANbus setting. The HEP-1000-W series is also designed with power supply and charging functions. With programmable voltage and constant ...

Contact Us

For catalog requests, pricing, or partnerships, please visit:
<https://www.woodgoods.pl>

Scan QR Code for More Information



<https://www.woodgoods.pl>