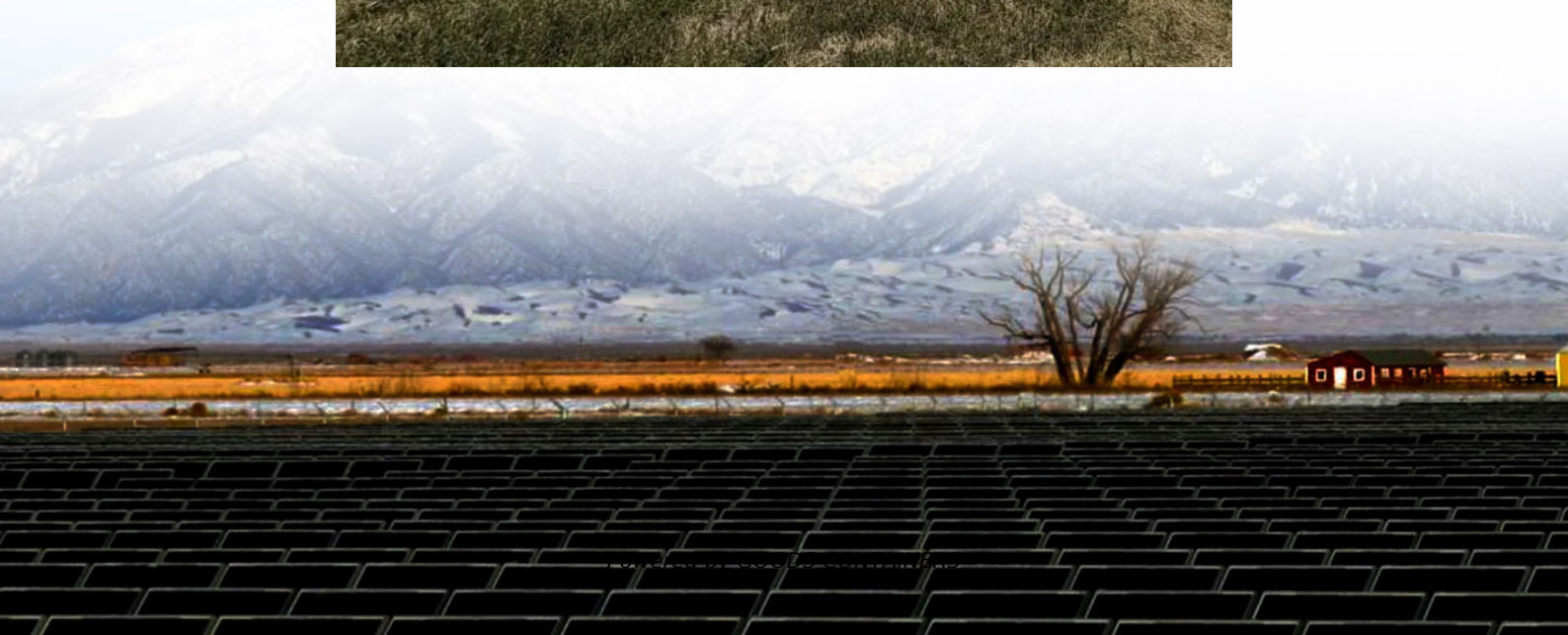


Base station power cabinet temperature range is zero





Overview

What is the energy saving rate of communication base station cooling system?

In the outdoor daily temperature range of 24–28 °C, 28–32 °C, 32–36 °C, 36–40 °C, the energy saving rate of the unit is 67.3 %, 65.2 %, 39.6 %, 6.9 %, respectively, which reduces the energy consumption of the communication base station cooling system to different degrees. Fig. 11. Average power and energy saving rates for different temperature ranges.

What is the temperature of a mobile communication base station?

(1) is 38.5 °C, which is lower than 40 °C, and meets the temperature control requirements of GB/T 51216 2017 "Technical Standard for Energy Conservation in Mobile Communication Base Station Engineering".

Can air distribution improve the temperature control effect of communication equipment?

The air distribution in the cabinet can be further optimized to improve the temperature control effect of communication equipment and reduce the energy consumption of cooling system. This study has certain reference value for temperature control of communication equipment and energy saving of base station cooling system. 1. Introduction.

Does BBU meet the temperature control requirements?

The unit was applied to a communication base station in Zhengzhou to conduct the filed test. The results showed that BBU in the cabinet met the temperature control requirements of relevant standards under short-term high temperature and extreme high temperature conditions. There was no high temperature alarm.



Base station power cabinet temperature range is zero

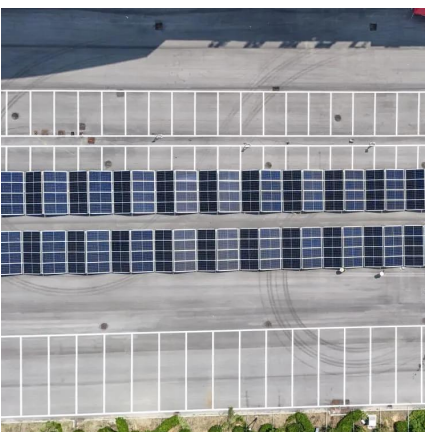
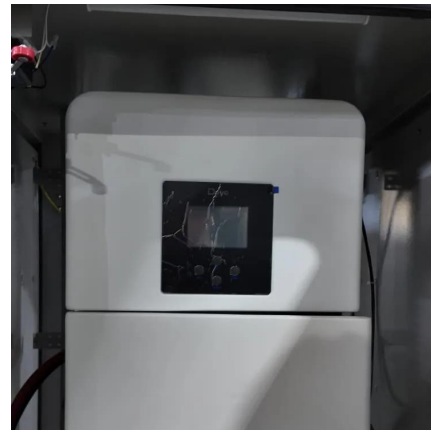


Cooling for Mobile Base Stations and Cell Towers

BackgroundUnattended base stations require an intelligent cooling system because of the strain they are exposed to. The sensitive telecom equipment is operating 24/7 with continuous load ...

Temperature of the energy storage cabinet

What is a good temperature for a battery?
Depending on the location of the base station, temperatures may range from a high of 50°C to a low of -30°C. The heat ...



What are the temperature requirements for a power cabinet?

The ventilation and insulation systems need to be designed to handle these large temperature swings and protect the components inside. As a power cabinet supplier, I ...

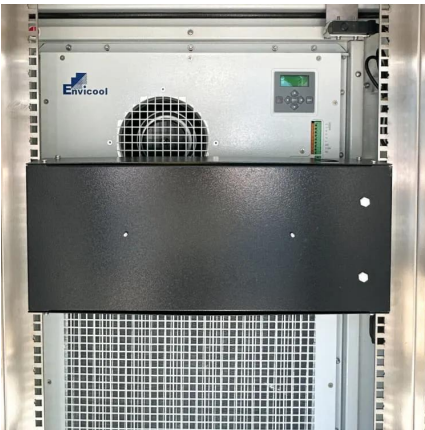
Storing Power Station In The Winter

Most modern power stations are equipped with LiFePO4 batteries. They can discharge safely in temperatures as low as -20°C (-4°F) and as high as 60°C (140°F). That means you can draw power even ...



Thermoelectric Cooling for Base Station and Cell Tower ...

Temperature control of sensitive telecom electronics in unattended mobile base stations and cell towers is vital for the operation of primary and back-up systems. Heat can ...



Experimental study on high temperature performance of ...

The air distribution in the cabinet can be further optimized to improve the temperature control effect of communication equipment and reduce the energy consumption of ...



What is the operating temperature range of a portable power station?

The operating temperature range of a portable power station is a critical factor that significantly influences its performance, lifespan, and safety. As a supplier of portable power stations, I ...





The Perfect Climate Inside Your Enclosure

Nevertheless, the most important issue remains: Is the temperature level within the permissible operating range of the installed components or is does the enclosure need climate ...



Thermoelectric Cooling for Base Station and ...

Temperature control of sensitive telecom electronics in unattended mobile base stations and cell towers is vital for the operation of primary and back-up systems. Heat can significantly degrade the ...

Energy Storage Cabinet Temperature: The Critical Frontier in ...

With China's CATL recently unveiling zero-thermal-runaway cells and the U.S. DOE allocating \$240 million for thermal R& D, the race to conquer energy storage temperature ...



Storing Power Station In The Winter

Most modern power stations are equipped with LiFePO4 batteries. They can discharge safely in temperatures as low as -20°C (-4°F) and as high as 60°C (140°F). That ...



Contact Us

For catalog requests, pricing, or partnerships, please visit:
<https://www.woodgoods.pl>

Scan QR Code for More Information



<https://www.woodgoods.pl>