

Base station low signal strong communication





Overview

What is a base station antenna?

The base station antennas transmit and receive RF (radio frequency) signals, or radio waves, to and from mobile phones near the base station. Without these radio waves, mobile communications would not be possible. Radio waves have been used for communication for more than 100 years. Radio and television broadcasting are well-known examples of this.

What is a low-carbon base station?

(A) The low-carbon base station consists of a power converter, power grid, photovoltaic, energy storage battery, and base station. The low-carbon base station system maintains communication with the control cloud platform and the micro base station.

Can low-carbon communication base stations improve local energy use?

Therefore, low-carbon upgrades to communication base stations can effectively improve the economics of local energy use while reducing local environmental pollution and gaining public health benefits. For this research, we recommend further in-depth exploration in three areas for the future.

Do mobile phones need a base station?

Mobile phones and other mobile devices require a network of base stations in order to function. The base station antennas transmit and receive RF (radio frequency) signals, or radio waves, to and from mobile phones near the base station. Without these radio waves, mobile communications would not be possible.



Base station low signal strong communication



Integrated Sensing and Communication Enabled Multiple Base Stations

Oct 6, 2023 · Driven by the intelligent applications of sixth generation (6G) mobile communication systems such as smart city and autonomous driving, which connect the physical and cyber ...

[Base stations and networks](#)

Base Stations Enable Mobile Communications
Antennas Are Placed in Various Locations
More Mobile Devices Means More Base Stations
Base Station Output Power Is Low
Exposure Limits Are Set by Independent Organizations
Exposure Levels Are Much Lower Than The Limits
Public Access Is Restricted Where Needed
No Adverse Health Effects According to The Who
Mobile phones and other mobile devices require a network of base stations in order to function. The base station antennas transmit and receive RF (radio frequency) signals, or radio waves, to and from mobile phones near the base station. Without these radio waves, mobile communications would not be possible. Radio waves have been used for communication. See more on ericsson Clausius Scientific Press[PDF]



Wireless Communication Base Station Location Selection ...

Jun 9, 2024 · 1. Introduction Recently, with the rapid development of wireless communication technology, the enhancement of wireless network performance is concerned with meeting the ...



[Optimizing redeployment of communication base station](#)

Feb 6, 2025 · Signal coverage quality and strength distribution in complex environments pose severe challenges, leading to the inadequacy of traditional two-dimensional base station ...

[The world's first realization of wireless base stations with ...](#)

Mar 31, 2023 · 2. Technology overview To address these issues, NTT focused on two key attributes of high-frequency wireless communications, strong antenna directivity *5 and signal ...



[How Do Base Station Analyzers Improve Wireless Communication](#)

Apr 23, 2025 · By providing critical insights into signal quality, interference, and system integrity, base station analyzers are instrumental in identifying issues before they affect service quality. ...

[Low-carbon upgrading to China's communications base stations ...](#)

Nov 21, 2025 · These outcomes demonstrate that upgrading to low-carbon base stations not only ensures economic feasibility but also delivers significant environmental and public health ...



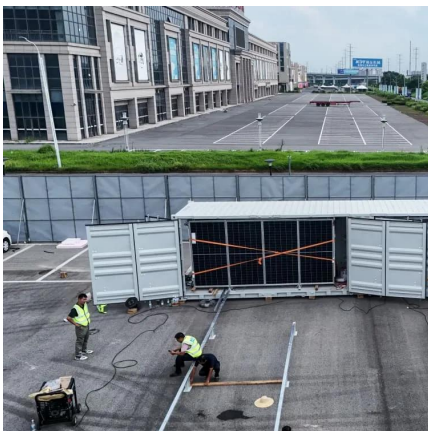
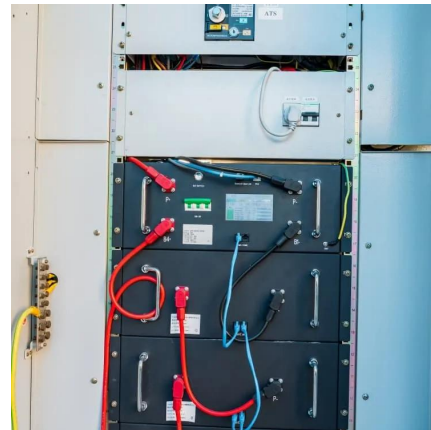


How Cable Loss Affects Antenna Efficiency in Remote Base Stations

Understanding how cable loss affects the efficiency of the antenna can allow antennas to work in remote areas. If we can keep the losses low in the cables, we can increase the strength of ...

[Communication Base Station Power Amplifier PCB Solution](#)

Aug 10, 2025 · An ideal base station power amplifier must exhibit high linearity to prevent signal distortion, high power efficiency to minimize energy consumption and heat, broad bandwidth to ...



[Wireless Communication Base Station Location Selection ...](#)

Jun 9, 2024 · 1. Introduction Recently, with the rapid development of wireless communication technology, the enhancement of wireless network performance is concerned with meeting the ...

[Optimize Signal Quality In 5G Private Network Base ...](#)

Dec 8, 2023 · Optimize Signal Quality In 5G Private Network Base Stations With the rapid evolution of cellular communication systems, there is a growing need for higher operating ...





[Signal Strength in Cellular Networks: Understanding Strong ...](#)

Jul 14, 2025 · Signal Strength Zones in Cellular Network Contexts: Strong Coverage vs Weak Coverage Signal strength is a critical component of the user experience in modern cellular ...

Contact Us

For catalog requests, pricing, or partnerships, please visit:
<https://www.woodgoods.pl>

Scan QR Code for More Information



<https://www.woodgoods.pl>