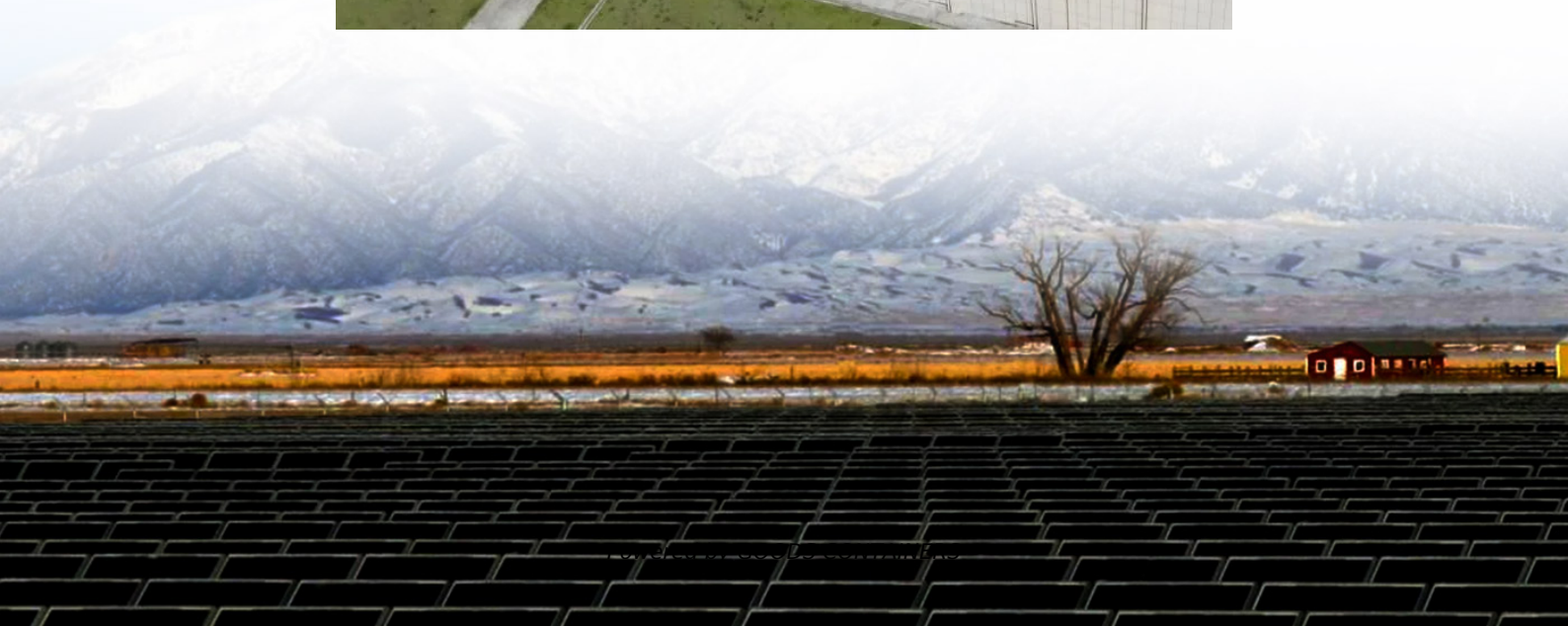


Atita inverter 72v to 220v





Overview

Specifications: Output waveform: pure sine wave Rated power: 3500w Peak power: 7000w Input DC voltage (DC): DC 12V/24V/48V/60V/72V AC output voltage: 220 V AC Frequency: 50Hz Product size: 35*18*8CM Product weight: 3.5KG Conversion efficiency: 90% Temperature protection: (65C) When the temperature exceeds 65°C-70°C, the inverter shuts down.



Atita inverter 72v to 220v

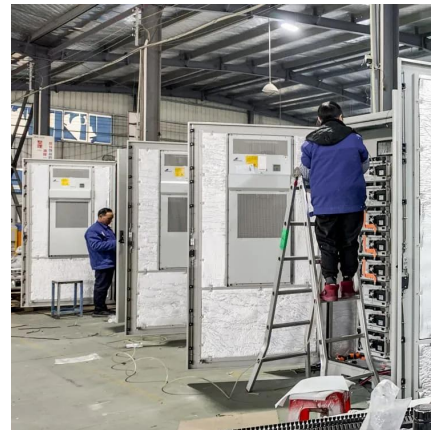


[48V/72V DC to 220V AC Power Inverter 10000W](#)

Oct 18, 2025 · 48v/72v DC to 220V AC Power Inverter 10000w Main Features: 1. LCD digital display show voltage, load and battery information in real time. 2. Peak power is 3 times of ...

[72V input inverter. 360VA industrial grade pure sine wave ...](#)

July 30, 2024 Heavy duty industrial grade pure sine wave DC/AC inverters, 48V or 72VDC input, 110VAC or 220VAC output, 360 watts, including waterproof styles The range of 72VDC input is ...



[5000W 15kw 24V 48V 60V 72V to 220V Pure Sine Wave UPS ...](#)

4 days ago · Low Frequency 5000W 15000W Battery Charger 24V 48V 60V 72V to 220V Pure Sine Wave UPS Inverter Power inverter converts 12V or 24V DC from battery or car lighter to ...



Contact Us

For catalog requests, pricing, or partnerships, please visit:
<https://www.woodgoods.pl>



Scan QR Code for More Information



<https://www.woodgoods.pl>