

Analysis of power consumption composition of 5g base station solar power generation system





Overview

How much energy does a 5G base station consume?

Because it is estimated that in 5G, the base station's density is expected to exceed 40-50 BSs/ Km². The energy consumption of the 5G network is driving attention and many world-leading network operators have launched alerts about the increased power consumption of the 5G mobile infrastructure.

Should power consumption models be used in 5G networks?

This restricts the potential use of the power models, as their validity and accuracy remain unclear. Future work includes the further development of the power consumption models to form a unified evaluation framework that enables the quantification and optimization of energy consumption and energy efficiency of 5G networks.

Does a balanced dataset improve energy prediction of 5G base stations?

For energy prediction of 5G base stations, this thesis finds that using a more balanced dataset, in terms of the number of samples for each product, has a positive impact for the ANN and the Gradient Boosted Trees model while the linear regression performs worse.

Is artificial neural networks a good power consumption model for 5G AAUs?

In this paper, we present a power consumption model for 5G AAUs based on artificial neural networks. We demonstrate that this model achieves good estimation performance, and it is able to capture the benefits of energy saving when dealing with the complexity of multi-carrier base stations architectures.



Analysis of power consumption composition of 5g base station solar



[Multi-objective interval planning for 5G base ...](#)

Large-scale deployment of 5G base stations has brought severe challenges to the economic operation of the distribution network, furthermore, as a new type of adjustable load, its operational flexibility has ...

[Power consumption analysis of access network in 5G mobile ...](#)

A power consumption model of LTE Macro BS based on the actual coverage radius of base stations was presented in [34] to address the feasibility of a solar power system to ...



[Power Consumption Modeling of 5G Multi-Carrier Base ...](#)

However, there is still a need to understand the power consumption behavior of state-of-the-art base station architectures, such as multi-carrier active antenna units (AAUs), ...



[Modelling the 5G Energy Consumption Using Real-world ...](#)

Accurate energy consumption modeling is essential for developing energy-efficient strategies, enabling operators to optimize resource utilization while maintaining network ...



[Energy Consumption Modelling for 5G Radio Base ...](#)

Mathematical optimization of energy consumption requires a model of the problem at hand. In this thesis linear regression is compared with the gradient boosted trees method and a neural ...



Multi-objective interval planning for 5G base station virtual power

Large-scale deployment of 5G base stations has brought severe challenges to the economic operation of the distribution network, furthermore, as a new type of adjustable load, ...



Comparison of Power Consumption Models for 5G Cellular Network Base

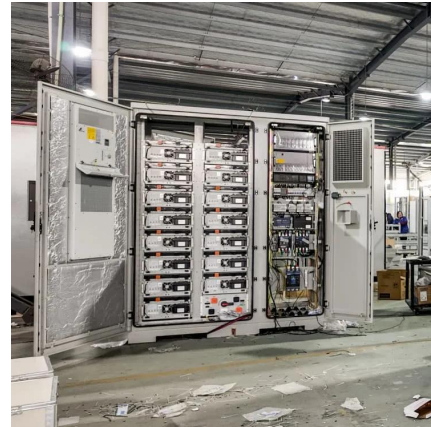
This paper conducts a literature survey of relevant power consumption models for 5G cellular network base stations and provides a comparison of the models. It highlights ...





[Analysis of power consumption in standalone 5G network ...](#)

This paper proposes two modified power consumption models that would accurately depict the power consumption for a 5G base station in a standalone network and a novel ...



[Power consumption based on 5G communication](#)

At present, 5G mobile traffic base stations in energy consumption accounted for 60% ~ 80%, compared with 4G energy consumption increased three times. In the future, high ...

[Power Consumption Modeling of 5G Multi-Carrier Base Stations...](#)

The fifth generation of the Radio Access Network (RAN) has brought new services, technologies, and paradigms with the corresponding societal benefits. However, the ...



Comparison of Power Consumption Models for 5G Cellular Network Base

The implementation of various base station (BS) energy saving (ES) features and the widely varying network traffic demand makes it imperative to quantitatively evaluate the energy ...



Contact Us

For catalog requests, pricing, or partnerships, please visit:
<https://www.woodgoods.pl>

Scan QR Code for More Information



<https://www.woodgoods.pl>