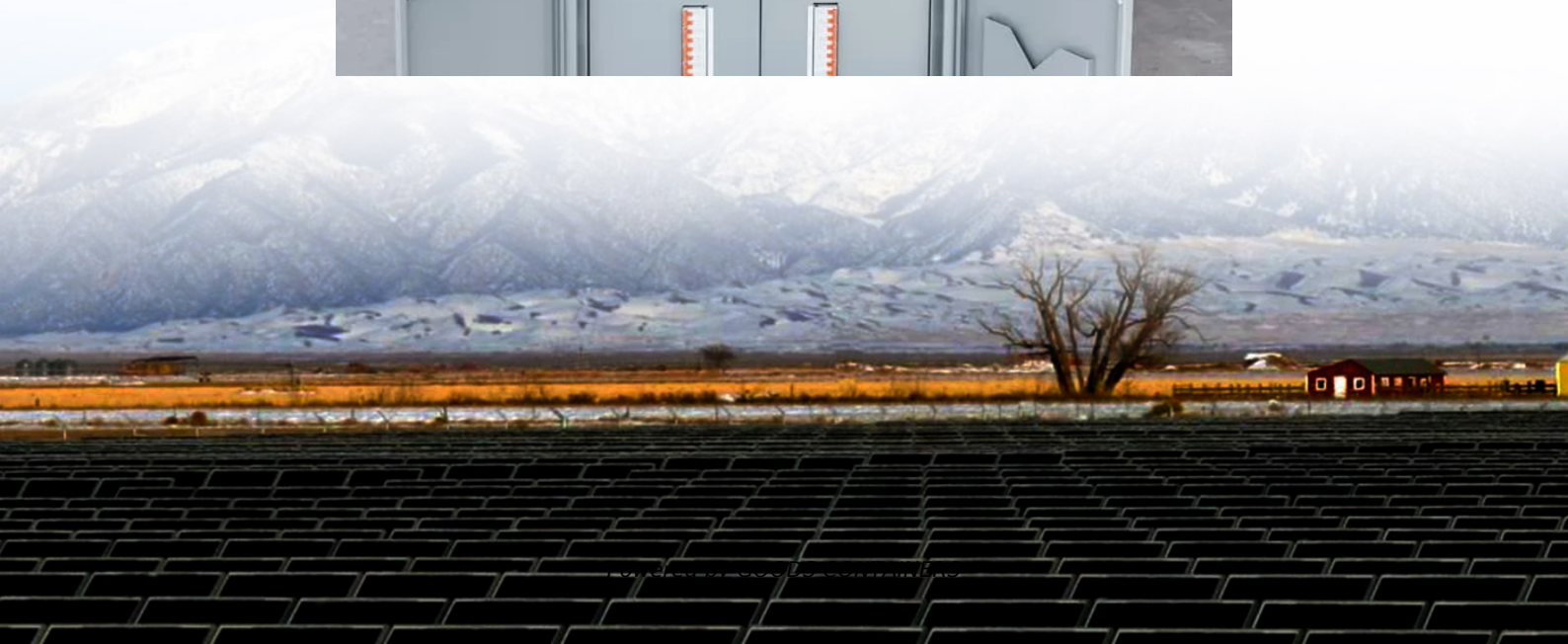


Aftermarket inverter power range





Overview

What is a recommended inverter power range?

By inputting your panel's rated power and number of panels, the calculator produces a recommended inverter power range that aligns with 80-100% of your system's total DC capacity. This approach ensures that your inverter is neither under-sized—risking energy losses and performance issues—nor oversized, which can lead to unnecessary costs.

Which inverter has the highest surge rating?

This includes most inverters made by Statpower, Cotek, Exeltech, Power to Go, Phocos, Sol-Ark and nearly all the inexpensive inverters in the 50 to 5000-watt range. The highest surge ratings are the transformer based, low-frequency switchers. This includes most Schneider, Xantrex, Magnum, Victron Energy and Outback Power.

What are inverter specifications?

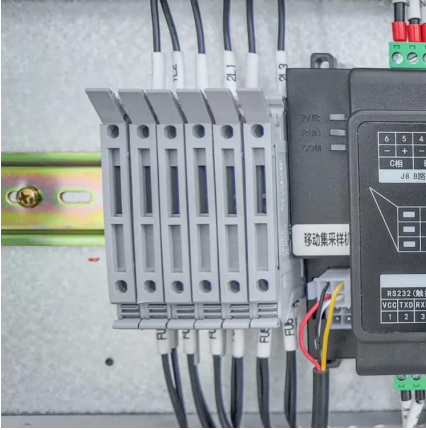
Specifications provide the values of operating parameters for a given inverter. Common specifications are discussed below. Some or all of the specifications usually appear on the inverter data sheet. Maximum AC output power This is the maximum power the inverter can supply to a load on a steady basis at a specified output voltage.

How much power does a commercial inverter have?

Large residential inverters are in the 3,000 W to 6,000 W range, with single-phase power. Small commercial inverters Small commercial inverters are in the 13 kW to 15 kW range and can include three-phase power. Large commercial inverters Large commercial inverters are in the 60 kW to 100 kW range.



Aftermarket inverter power range



[Best Off Grid Inverter for Home Use \(2025 Buyer's Guide\)](#)

Mar 28, 2025 · 2.How to Choose the Right Off-Grid Inverter for Your Home Choosing the right off-grid solar inverter isn't just about picking the most expensive or highest wattage model--it's ...

Contact Us

For catalog requests, pricing, or partnerships, please visit:
<https://www.woodgoods.pl>

Scan QR Code for More Information





<https://www.woodgoods.pl>