

# **3D Communication 4GLTE Base Station Indicators**





## Overview

---

What are the key indicators of TK's 4G/LTE network?

More specifically, it is focused on analyzing the following key indicators: mobility, integrity and availability. The measurements are performed on a segment of the TK's 4G/LTE network in Pristina, consisting of 24 base stations. The notified indicators are measured at network level.

How cellular networks affect base station placement?

The proposed method explores the combined impact of strong cellular networks influencing parameters, such as capacity, coverage, and transmit power in the base station placement process. A genetic algorithm-based approach is selected as an optimization technique, because it can produce a robust and good set of optimal solution spaces.

Can genetic algorithms optimize base station placement in cellular networks?

This work proposed and applied a field measurement-based genetic algorithms approach to optimize base station placement in cellular networks. The proposed method explores the combined impact of strong cellular networks influencing parameters, such as capacity, coverage, and transmit power in the base station placement process.

What are key performance indicators (KPIs) in 4G/LTE?

The 4G/LTE technology has been developed to meet user requirements and provide high network performance. In order to monitor and optimize the network performance, there is a need of using Key Performance Indicators (KPIs). The KPIs can control the quality of provided services and achieved resource utilization.



## 3D Communication 4GLTE Base Station Indicators

---

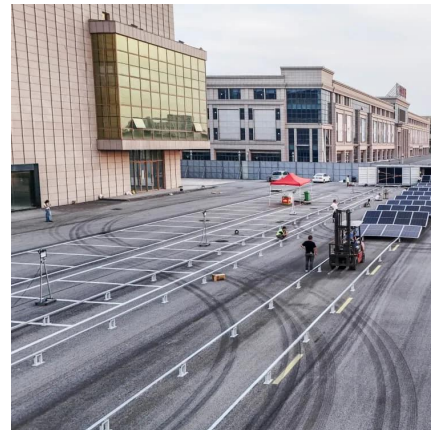


### [Building Your Own 4G LTE Base Station](#)

We've seen quite a few DIY 2G networks over the years, but the 4G field has been relatively barren. Turns out, there's an open source suite called srsRAN that lets you use an SDR for se...

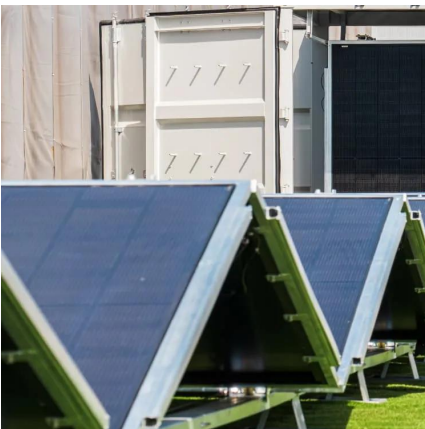
### [\(PDF\) Accurate Base Station Placement in 4G LTE Networks ...](#)

An important component of 4G LTE network planning is the proper placement of evolved node base stations (eNodeBs) and the configuration of their antenna elements.



### [Accurate Base Station Placement in 4G LTE Networks ...](#)

An important component of 4G LTE network planning is the proper placement of evolved node base stations (eNodeBs) and the configuration of their antenna elements. fi This ...



### [Modular Communications Transceiver for 4G/5G ...](#)

This application report describes the methodology to construct modular 4G/5G distributed antenna systems (DAS) and base stations (BTS). It provides an example of an ...



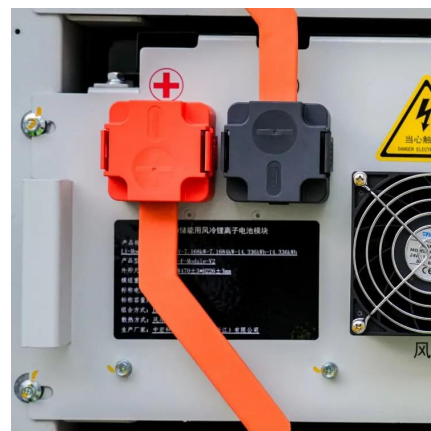
### [Accurate Base Station Placement in 4G LTE Networks Using ...](#)

An important component of 4G LTE network planning is the proper placement of evolved node base stations (eNodeBs) and the configuration of their antenna elements.



### [Wireless Communication Base Station Location Selection ...](#)

1. Introduction Recently, with the rapid development of wireless communication technology, the enhancement of wireless network performance is concerned with meeting the ...



### [Analysis of key performance indicators of a 4G LTE network ...](#)

As wireless systems continue to grow and evolve to accommodate upward scaling traffic requirements following the rapid deployment of 4G LTE networks and the evolving 5G ...





## [Building Your Own 4G LTE Base Station](#)

We've seen quite a few DIY 2G networks over the years, but the 4G field has been relatively barren. Turns out, there's an open source suite called srsRAN that lets you use an ...



## [Optimization of Base Station Placement in 4G LTE ...](#)

This paper uses a field measurement-based genetic algorithms approach to optimize base station placement in cellular networks. The proposed method explores the ...

## [Wavesight 4G-LTE Cellular Base Station Datasheet](#)

About 4G & 5G Base Stations Using the latest Software Defined Radio and RF technology, our cellular Base Station products support 4G & 5G networks in all the common ...



## [The Analysis of Key Performance Indicators \(KPI\) in ...](#)

The measurements are performed on a segment of the TK's 4G/LTE network in Pristina, consisting of 24 base stations. The notified indicators are measured at network level.



## Contact Us

---

For catalog requests, pricing, or partnerships, please visit:  
<https://www.woodgoods.pl>

### Scan QR Code for More Information



<https://www.woodgoods.pl>