

265W solar panel area





Overview

How do I calculate the total area needed for solar panel installation?

The total area needed for solar panel installation is vital for effective PV system design and planning. Accurate area estimation ensures optimal panel placement, maximizes energy harvest, and prevents shading or structural conflicts. Tip: Gross area = Net module area × Layout factor (accounts for row spacing, walkways, setbacks).

Does SolarWorld AG make a specification change?

SolarWorld AG reserves the right to make specification changes without notice. Minor reduction in efficiency under partial load conditions at 25°C: at 200 W/m², 95% (+/-3%) of the STC efficiency (1000 W/m²) is achieved. * Please refer to the Sunmodule installation instructions for the details associated with these load cases.

How much space is required for a 500 KW installation?

Interpretation: Approximately 3600 m² (0.36 hectares) is required for this 500 kW ground-mounted installation, including spacing for optimal performance. Advanced Considerations and Additional Factors Impact of Geographic Location and Latitude Higher latitudes require steeper tilt angles, increasing footprint.



265W solar panel area

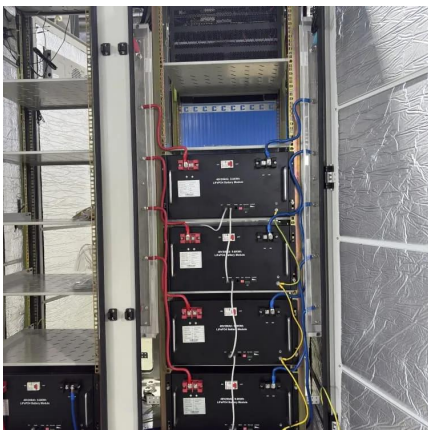


[265 Watt Solar Panel: The Smart Investment for Reliable, ...](#)

265 Watt Solar Panel Solar energy has become a mainstream solution for clean power in residential, commercial, and industrial applications. Among the many types of ...

[265 Watt Solar Panel: The Smart Investment ...](#)

265 Watt Solar Panel Solar energy has become a mainstream solution for clean power in residential, commercial, and industrial applications. Among the many types of photovoltaic



[Sunshine Solar , SY-265W-P , Solar Panel Datasheet , ENF Panel ...](#)

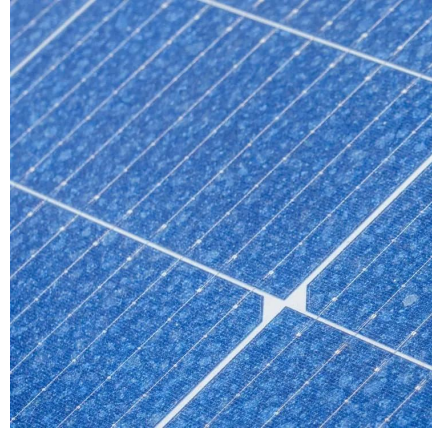
Shenzhen Sunshine Solar Electrical Appliance Co., Ltd. Solar Panel Series SY-265W-P. Detailed profile including pictures, certification details and manufacturer PDF

[A Technical Guide to 265wp Solar Panel: Standards, ...](#)

Types of 265W Solar Panels A 265-watt solar panel is a popular mid-range photovoltaic



module that balances efficiency, size, and affordability for residential, commercial, and off-grid ...

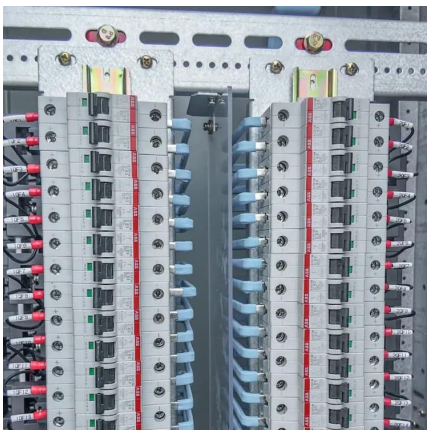


[265 Watt Solar Panel Guide 2025: Specs, Prices & Best Models](#)

Complete guide to 265W solar panels including specifications, pricing, top models from LG, Canadian Solar & more. Expert reviews & buying advice for 2025.

[Ankara Solar AS-P60 265W Solar Panel Specifications](#)

The AS-P60 265W solar panels are compatible with various solar energy systems, including grid-tied and off-grid setups. Homeowners can also pair these panels with energy storage ...



[SolarWorld Sunmodule solar panel 265 watt mono data ...](#)

SolarWorld Plus-Sorting Plus-Sorting guarantees highest system efficiency. SolarWorld only delivers modules that have greater than or equal to the nameplate rated power.



Contact Us

For catalog requests, pricing, or partnerships, please visit:
<https://www.woodgoods.pl>

Scan QR Code for More Information



<https://www.woodgoods.pl>