

12v to 220v inverter can be directly connected to home





Overview

What is a simple 12V to 220V inverter?

Simple 12V to 220V inverters find widespread use in automotive applications, solar power systems, emergency backup power, and portable power solutions. Understanding load characteristics helps determine appropriate inverter specifications and ensures reliable operation.

What is a 12V DC to 220V AC converter?

A 12V DC to 220 V AC converter can also be designed using simple transistors. It can be used to power lamps up to 35W but can be made to drive more powerful loads by adding more MOSFETS. The inverter implemented in this circuit is a square wave inverter and works with devices that do not require pure sine wave AC.

What are the advantages of a 12V to 220V inverter?

Sufficient power: When the rated load power equal to or less than inverter power, the inverter will not produce overload protection and can go on working. **Good safety performance:** The 12v to 220v inverter features in short-circuit, overload, overvoltage, under-voltage, over-temperature protections.

How does a home power inverter work?

The home power inverter directly take 12V DC power supply from a DC power source (such as: storage batteries, etc.), with a special clamp connected to the inverter into AC 220V, to supply electrical products. You can size the rated power electrical products to select a matched power inverter.



12v to 220v inverter can be directly connected to home



[Best 12 Volt to 220 Volt Pure Sine Wave Inverters for Home ...](#)

Buying Guide for 12V to 220V Power Inverters
Choosing the right 12 volt 220 volt inverter depends on a few critical factors to ensure your electronics receive safe and adequate ...

[12v to 220v Home Power Inverter Introduction](#)

The home power inverter directly take 12V DC power supply from a DC power source (such as: storage batteries, etc.), with a special clamp connected to the inverter into AC 220V, to supply electrical products.



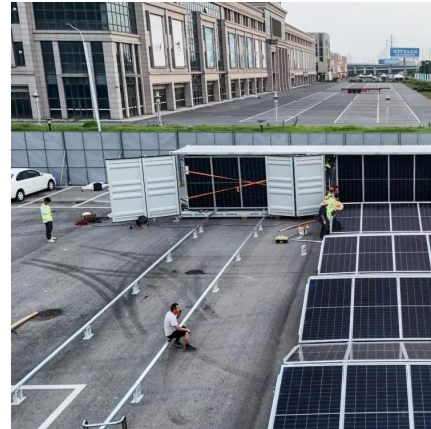
[Best 12V to 220V Power Inverters for Cars, Homes, and ...](#)

Power inverters convert DC power from a 12V battery source into usable AC power at 220V, making them essential for cars, RVs, and off-grid applications. This article reviews ...



[12V-220V/230V Battery Inverter , 3000 Watt Pure Sine Wave](#)

Shop Leaptrend 12V DC to 220V/230V/240V AC 3000W Pure Sine Wave Battery Inverter designed for RVs, Trucks, Outdoor, Off-Road, Marine, Home Household Electronics including ...



[Best 12V to 220V Power Inverters for Cars, ...](#)

Power inverters convert DC power from a 12V battery source into usable AC power at 220V, making them essential for cars, RVs, and off-grid applications. This article reviews five top 12V to 220V power inverters ...



[12v to 220v Home Power Inverter Introduction](#)

The home power inverter directly take 12V DC power supply from a DC power source (such as: storage batteries, etc.), with a special clamp connected to the inverter into AC 220V, to supply ...



[12V DC to 220V AC Inverter Circuit & PCB](#)

Inverter Circuit are very much helpful to produce high voltage using low voltage DC supply or Battery. DC-DC Converter circuit can also be used but it has certain voltage ...





[Best Inverter 12V to 220V Power Converters for Home and ...](#)

Choosing the right inverter to convert 12V DC to 220V AC is essential for powering your electronics smoothly and safely, whether you are at home, camping, or on the road. ...

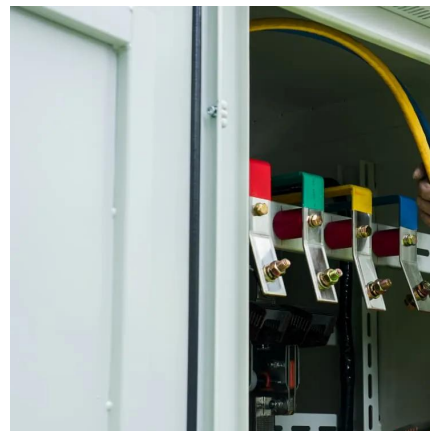


[Complete Guide to Building a DC to AC ...](#)

A DC to AC inverter circuit transforms 12V DC input into 220V AC output, enabling you to power standard household devices from battery sources. This comprehensive guide will walk you through the theory, ...

[How to Choose the Best 12V to 220V Inverter for Your Needs](#)

The growing demand for energy independence, mobile lifestyles, and resilient home systems has driven increased interest in 12V to 220V inverters. With more people adopting ...



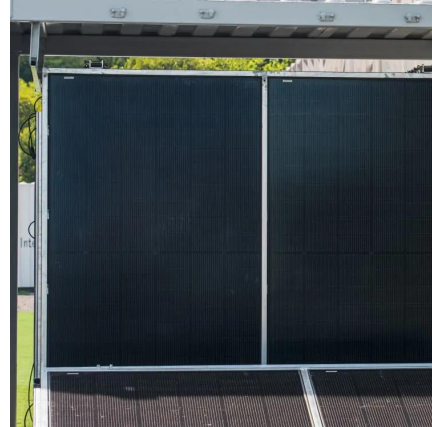
Complete Guide to Building a DC to AC Inverter Circuit: 12V to 220V

A DC to AC inverter circuit transforms 12V DC input into 220V AC output, enabling you to power standard household devices from battery sources. This comprehensive guide will ...



[12V DC to 220V AC Inverter Circuit & PCB](#)

Inverter Circuit are very much helpful to produce high voltage using low voltage DC supply or Battery. DC-DC Converter circuit can also be used but it has certain voltage limitations. The 12V DC to 220V AC ...



Contact Us

For catalog requests, pricing, or partnerships, please visit:
<https://www.woodgoods.pl>

Scan QR Code for More Information



<https://www.woodgoods.pl>