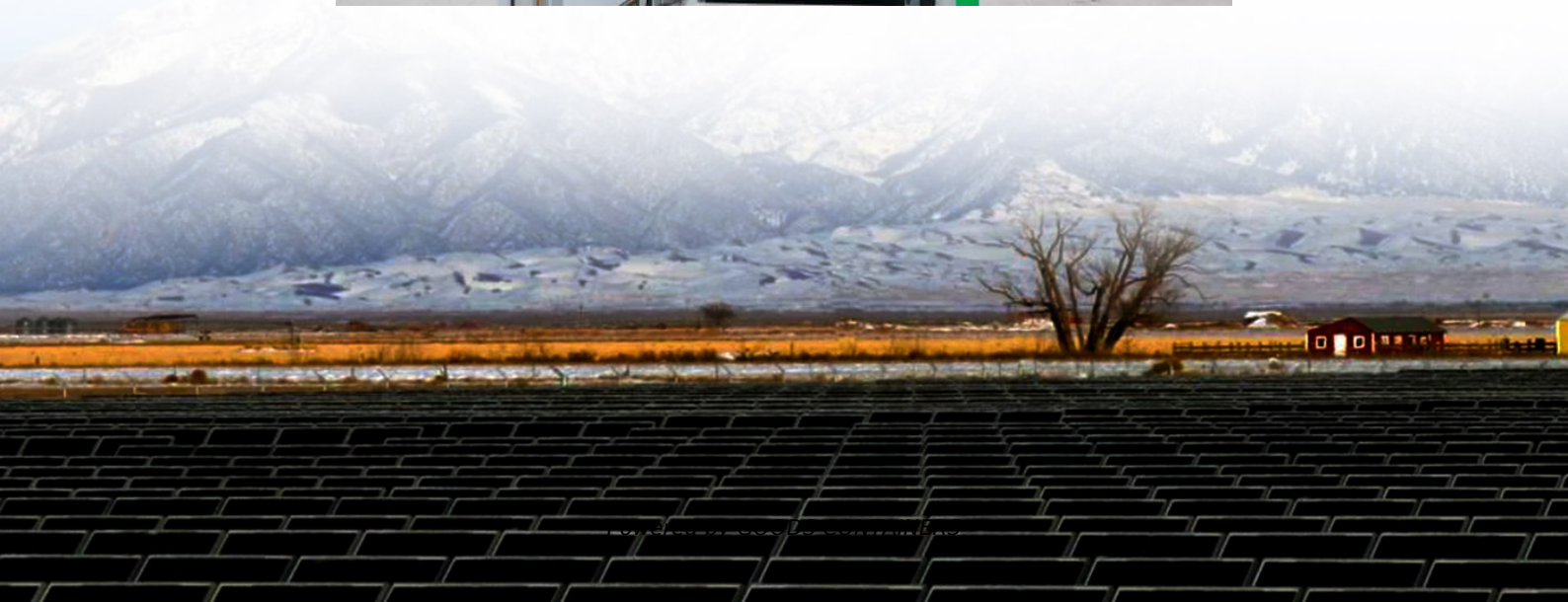


12v inverter normal voltage





Overview

What voltage is a 12V inverter?

Inverters come in various configurations, each designed for specific power systems. Common rated input voltages include 12V, 24V, and 48V. The choice depends on the application, the size of the power system, and the available power source. A 12V inverter is commonly used for smaller applications, such as in vehicles or small off-grid setups.

What is a safe voltage for a 12V inverter?

For a 12V inverter, the maximum input inverter voltage is typically around 16VDC. This safety margin provides a buffer to accommodate fluctuations in the power source and protect the inverter from potential damage. What happens if voltage is too high for inverter?

.

What is a power inverter?

Power inverters, or simply 'inverters', are transformers that will convert a DC current into an AC current, allowing you to run higher voltage equipment from a battery or other DC power source.

What voltage does an inverter use?

In different countries, the applicable AC voltage is different, and most countries use 110v, 120v output inverter voltage. You can confirm on the search engine or see how much AC voltage the home appliance label uses. How can the quality of inverter output voltage be measured?



12v inverter normal voltage



12V vs. 24V vs. 48V Power Inverters: How to Choose the Right Voltage

When shopping for a power inverter, most beginners fixate on wattage or price--but the input voltage (12V, 24V, or 48V) is just as critical. Pick the wrong voltage, and your inverter ...



[Inverter Battery Voltage: How Many Volts Are Needed For ...](#)

An inverter battery typically operates at 12V, 24V, or 48V. These voltages represent the nominal direct current (DC) needed for the inverter's function. Selecting the ...

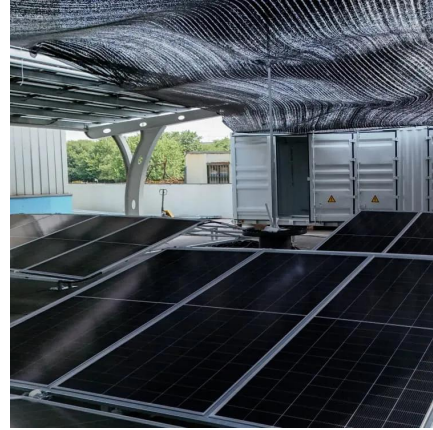
Inverters Guide

Inverters Guide Power inverters, or simply 'inverters', are transformers that will convert a DC current into an AC current, allowing you to run higher voltage equipment from a battery or other DC power source. ...



[A comprehensive guide to inverter voltage](#)

What is a 12VDC to 120VAC inverter? 12VDC to 120VAC Inverter is a common device that converts 12V DC power to AC power with a nominal output of 120V. 120 volts AC is the standard household voltage in ...



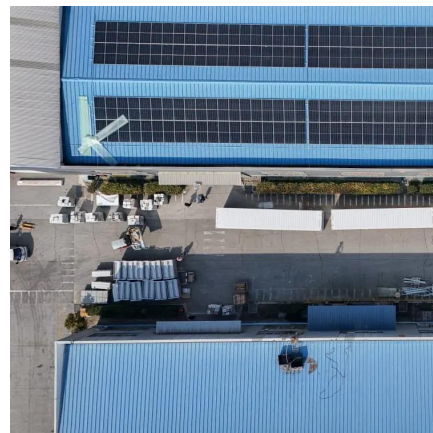
[How to adjust the output voltage of an Inverter Solar 12v ...](#)

Inconsistent Output Voltage: If the output voltage fluctuates or is inconsistent, it could be due to a problem with the battery, the inverter's internal components, or the electrical connections. ...



[How to Choose the Right Inverter Battery Voltage for Your ...](#)

Understanding inverter battery voltage is key to creating a strong and dependable power system. This detailed guide explores how to choose the right voltage, offers tips for specific uses, and ...



[Inverter Battery Voltage Chart](#)

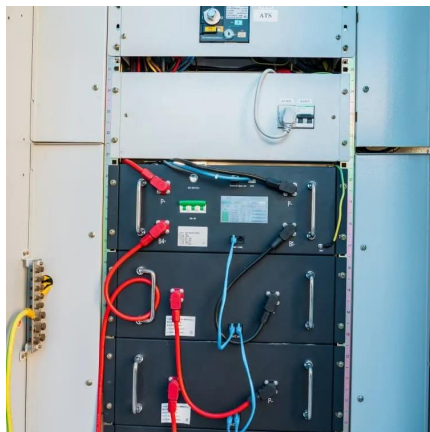
An inverter battery voltage chart shows the relationship between a battery's charge level and its voltage. Battery voltage charts describe the relation between the battery's charge ...





How to adjust the output voltage of an ...

Inconsistent Output Voltage: If the output voltage fluctuates or is inconsistent, it could be due to a problem with the battery, the inverter's internal components, or the electrical connections. Check the battery voltage, ...



How To Read And Interpret An Inverter Specification

Input Voltage Input voltage indicates the DC voltage required to operate the inverter. Inverters generally have an input voltage of 12V, 24V, or 48V. The inverter selected must ...

How to Choose the Right Inverter Battery

...

Understanding inverter battery voltage is key to creating a strong and dependable power system. This detailed guide explores how to choose the right voltage, offers tips for specific uses, and shares care practices.



How Does Input Voltage (12V, 24V, 48V) Affect Inverter ...

When selecting a low voltage ac inverter for your industrial application, understanding the impact of input voltage is crucial. The choice between 12V, 24V, and 48V ...



[How To Read And Interpret An Inverter ...](#)

Input Voltage Input voltage indicates the DC voltage required to operate the inverter. Inverters generally have an input voltage of 12V, 24V, or 48V. The inverter selected must match the power source, such as ...



Contact Us

For catalog requests, pricing, or partnerships, please visit:
<https://www.woodgoods.pl>

Scan QR Code for More Information



<https://www.woodgoods.pl>